

**ALLEN COUNTY, OHIO
GENERAL FUND
FINANCIAL STATEMENTS FOR THE
THREE MONTH PERIOD ENDING
JUNE 30, 2006 and 2005**

Prepared by Ben E. Diepenbrock, CPA
AUDITOR OF ALLEN COUNTY, OHIO

**ALLEN COUNTY, OHIO
SIX MONTH PERIOD ENDED JUNE 30, 2006 AND 2005
FINANCIAL STATEMENTS**

TABLE OF CONTENTS

| | |
|--|----|
| Cover Letter | |
| Statement of Cash Receipts, Disbursements and Changes in Fund Balance, General Fund, for the Six Month Period Ended June 30, 2006 and 2005..... | 1 |
| Schedule of Estimated and Actual Revenues, General Fund, for the Six Month Period Ended June 30, 2006..... | 2 |
| Schedule of Expenditures Compared to Appropriations, General Fund, for the Six Month Period Ended June 30, 2006..... | 3 |
| Notes and Explanations to the Quarterly Financial Reports | 4 |
| Graphs to Accompany the Quarterly Financial Reports | 8 |
| Expenditures by Department, General Fund, For Period Ended June 30, 2006 | 12 |



ALLEN COUNTY AUDITOR
BEN E. DIEPENBROCK, CPA
301 N. Main Street
P.O. Box 1243
Lima, OH 45802
Phone: 419-223-8520
Fax: 419-222-2543

visit us at www.allencountyohio.com/aud

August 29, 2006

Allen County Elected Officials and Department Heads
Allen County Residents and Members of the News Media

Dear Financial Statement Users:

I am presenting the second quarter 2006, General Fund financial statements and schedules for your review. The concept of accountability requires that government officials report financial information to the public, their elected representatives and other users who make decisions based upon this information. The Governmental Accounting Standards Board in their *Concepts Statement I* state, "Accountability is the paramount objective of governmental financial reporting—the objective from which all other financial reporting objectives flow." I believe that reasonable people can make decisions when information is provided to them and that is why I prepare this report.

Our beginning (carryover) fund balance declined by \$822,908 (or 21.3%) from January 2005 to January 2006. Our revenues, transfers in and advances increased by \$348,812 (or 2.8%) primarily due to an increase in interest income and sales tax which were offset by a decrease in real estate taxes and other financing sources. Expenditures increased by \$997,750 (7.8%) because of an increase in salaries, services and transfers out. The cumulative effect of these transactions led to a significant decrease in the cash position of the county. As a result, our cash fund balance decreased by \$1,471,846 which is a decline of 44.3% from the second quarter of 2005, when the cash fund balance was moderately large.

These statements simply and objectively express the transactions that occurred in the second quarter. Because the presentation of the statements is on the cash basis, they do not consider future plans, assets or actual liabilities that exist at this point in time. Please take the time to read the notes to the financial reports for more facts relating to these statements. As your auditor, I will continue to monitor our finances closely for changes that might impact our operations.

As always, feel free to call me if you have any feedback, observations or recommendations.

Sincerely,

A handwritten signature in black ink that reads "Ben E. Diepenbrock" with a stylized flourish at the end.

Ben E. Diepenbrock, CPA
Auditor of Allen County, Ohio

Allen County, Ohio
Statement of Cash Receipts, Disbursements and Changes in Fund Balance
General Fund
For the Six Month Period Ended June 30, 2006 and 2005

| | 1st Half 2006 | 1st Half 2005 | Variance Favorable (Unfavorable) |
|--|----------------------|--------------------|-------------------------------------|
| Revenues: | | | |
| Local taxes: | | | |
| Real estate taxes | \$1,259,923 | \$1,662,373 | (\$402,450) |
| Personal property taxes | 111,140 | 256,974 | (145,834) |
| House trailer tax | 9,014 | 8,778 | 236 |
| Rollback reimbursement | 322,184 | 206,720 | 115,464 |
| County sales tax | 6,279,227 | 5,889,027 | 390,200 |
| Transfer and conveyance fees | 261,522 | 163,509 | 98,013 |
| Local government fund | 882,085 | 868,514 | 13,571 |
| Local government assistance fund | 179,323 | 178,236 | 1,087 |
| Total local taxes | <u>9,304,418</u> | <u>9,234,131</u> | <u>70,287</u> |
| Other revenues: | | | |
| Fees | 824,360 | 772,714 | 51,646 |
| Licenses | 2,556 | 2,898 | (342) |
| Interest | 892,548 | 483,345 | 409,203 |
| Sales and rents | 211,952 | 305,587 | (93,635) |
| Miscellaneous and reimbursements | 846,098 | 770,872 | 75,226 |
| Courts | 396,348 | 330,948 | 65,400 |
| Detention Center | 35,806 | 54,352 | (18,546) |
| Federal grants | 0 | 24,307 | (24,307) |
| Total other revenues | <u>3,209,668</u> | <u>2,745,023</u> | <u>464,645</u> |
| Total General Fund revenue | <u>12,514,086</u> | <u>11,979,154</u> | <u>534,932</u> |
| Expenditures: | | | |
| Salaries | 6,366,218 | 6,133,910 | 232,308 |
| Insurance | 1,384,223 | 1,307,922 | 76,301 |
| Public employees retirement (PERS) | 1,047,884 | 866,536 | 181,348 |
| Medicare | 72,489 | 66,861 | 5,628 |
| Unemployment | 1,568 | 439 | 1,129 |
| Materials and supplies | 778,433 | 703,523 | 74,910 |
| Services | 2,899,567 | 2,547,538 | 352,029 |
| Equipment | 36,763 | 25,100 | 11,663 |
| Grants to other county depts. | 684,753 | 698,421 | (13,668) |
| Total expenditures | <u>13,271,898</u> | <u>12,350,250</u> | <u>921,648</u> |
| Excess of revenues under expenditures | (757,812) | (371,096) | (386,716) |
| Other financing sources (uses): | | | |
| Transfer in | 0 | 100,000 | (100,000) |
| Transfer out | (520,845) | (284,743) | (236,102) |
| Advance in | 149,384 | 235,504 | (86,120) |
| Advance out | (50,000) | (210,000) | 160,000 |
| Total other financing sources (uses) | <u>(421,461)</u> | <u>(159,239)</u> | <u>(262,222)</u> |
| Excess of revenues and other financing sources under expenditures and other financing uses | (1,179,273) | (530,335) | (648,938) |
| Beginning fund balance, January 1, 2006 and 2005 | <u>3,032,390</u> | <u>3,855,298</u> | <u>(822,908)</u> |
| Ending fund balance, June 30, 2006 and 2005 | <u>1,853,117</u> | <u>3,324,963</u> | <u>(1,471,846)</u> |
| Outstanding encumbrances | <u>(3,196,980)</u> | <u>(2,791,208)</u> | <u>(405,772)</u> |
| Unencumbered fund balance, June 30, 2006 and 2005 | <u>(\$1,343,863)</u> | <u>\$533,755</u> | <u>(\$1,877,618)</u> |

This is an unaudited financial statement.

Prepared by Allen County Auditor

Allen County, Ohio
Schedule of Estimated and Actual Revenues-Cash Basis
General Fund
For the Six Month Period Ended June 30, 2006

| | Annual Budgeted Revenues | Total Receipt for 2006 | Variance Over (Under) | % Received To Date |
|----------------------------------|--------------------------------|------------------------------|------------------------------|-----------------------|
| Revenues: | | | | |
| Local taxes: | | | | |
| Real estate taxes | \$2,139,000 | \$1,259,923 | (\$879,077) | 58.90% |
| Personal property taxes | 759,000 | 111,140 | (647,860) | 14.64% |
| House trailer tax | 14,000 | 9,014 | (4,986) | 64.39% |
| Rollback reimbursement | 317,000 | 322,184 | 5,184 | 101.64% |
| County sales taxes | 12,900,000 | 6,279,227 | (6,620,773) | 48.68% |
| Transfer and conveyance fees | 341,000 | 261,522 | (79,478) | 76.69% |
| Local government fund | 1,614,000 | 882,085 | (731,915) | 54.65% |
| Local government assistance | 327,000 | 179,323 | (147,677) | 54.84% |
| Total local taxes | <u>18,411,000</u> | <u>9,304,418</u> | <u>(9,106,582)</u> | <u>50.54%</u> |
| Other revenues: | | | | |
| Fees | 2,310,000 | 824,360 | (1,485,640) | 35.69% |
| Licenses | 5,300 | 2,556 | (2,744) | 48.23% |
| Interest | 1,300,000 | 892,548 | (407,452) | 68.66% |
| Sales and rents | 392,887 | 211,952 | (180,935) | 53.95% |
| Miscellaneous and reimbursements | 1,566,935 | 846,098 | (720,837) | 54.00% |
| Court revenues | 265,000 | 396,348 | 131,348 | 149.57% |
| Detention center | 61,000 | 35,806 | (25,194) | 58.70% |
| Transfers in | 100,000 | 0 | (100,000) | 0.00% |
| Advances in | 50,000 | 149,384 | 99,384 | 298.77% |
| Total other revenues | <u>6,051,122</u> | <u>3,359,052</u> | <u>(2,692,070)</u> | <u>55.51%</u> |
| Total General Fund revenues | <u><u>\$24,462,122</u></u> | <u><u>\$12,663,470</u></u> | <u><u>(\$11,798,652)</u></u> | <u><u>51.77%</u></u> |

This is an unaudited financial statement.

Prepared by Allen County Auditor

Allen County, Ohio
Schedule of Expenditures Compared to Appropriations-Cash Basis
General Fund
For the Six Month Period Ended June 30, 2006

| | <u>Current Year Appropriations</u> | <u>Total Expenditures and Encumbrances</u> | <u>Variance Favorable (Unfavorable)</u> | <u>% Spent To Date</u> |
|---|--|--|---|----------------------------|
| Expenditures and budgeted appropriations: | | | | |
| Salaries | \$13,047,206 | \$6,366,218 | \$6,680,988 | 48.79% |
| Insurance | 2,635,835 | 1,394,534 | 1,241,301 | 52.91% |
| Public employees retirement | 1,835,355 | 1,047,884 | 787,471 | 57.09% |
| Medicare | 157,366 | 72,489 | 84,877 | 46.06% |
| Unemployment | 5,000 | 1,568 | 3,432 | 31.36% |
| Materials and supplies | 1,479,496 | 1,364,619 | 114,877 | 92.24% |
| Services | 5,886,769 | 5,032,094 | 854,675 | 85.48% |
| Capital outlay for equipment | 89,887 | 80,362 | 9,525 | 89.40% |
| Grants to other county depts. | 794,114 | 789,559 | 4,555 | 99.43% |
| Transfers out | 853,142 | 840,426 | 12,716 | 98.51% |
| Advances out | 50,000 | 50,000 | 0 | 100.00% |
| Total expenditures | <u>\$26,834,170</u> | <u>\$17,039,753</u> | <u>\$9,794,417</u> | <u>63.50%</u> |

This is an unaudited financial statement.

Appropriations include prior year carryover plus current year appropriations.
Actual expenditures also include encumbrances (commitments against appropriations).

Prepared by Allen County Auditor

Allen County, Ohio
Notes and Explanations to Quarterly Financial Reports
For the Six Month Period Ended June 30, 2006

The financial statements and schedules for the General Fund are prepared on the basis of cash receipts and disbursements. As a result, revenues are recognized when received rather than when earned and expenditures are recognized when paid rather than when a liability is incurred. Adjustments are made at year end to bring the financial statements into conformity with generally accepted accounting principles (GAAP).

These notes are presented to explain in more detail what is included on the face of the financial statements. This information explains what is included in certain accounts for example and the statements are best read in conjunction with these notes.

The financial statements and schedules presented are for the General Fund only. The General Fund is the primary operating fund of the county. It accounts for all receipts and expenditures that are not legally required to be accounted for in a separate fund. The General Fund includes such departments as the commissioners, auditor, treasurer, sheriff, recorder, clerk of courts, the courts, prosecutor, coroner and others.

The *Statement of Cash Receipts, Disbursements and Changes in Fund Balance* shows the actual cash receipts and expenditures for the first six months which covers the period January 1, 2006 through June 30, 2006. This statement also shows a comparison of receipts and expenditures for two years. A comparative financial statement provides more information for management to make decisions and gives the reader a better idea of how we compare with last year.

The *Schedule of Budgeted and Actual Revenues* and the *Schedule of Expenditures Compared to Appropriations* for 2006, compares the estimated and actual revenues for the current year and the expenditures and encumbrances against the appropriations authorized by the Allen County Commissioners.

The General Fund budget for 2006 was estimated as follows:

| | |
|---|-------------------|
| January 1, 2006 unencumbered carryover fund balance of \$ | 3,032,390 |
| Estimated revenues for 2006 | <u>24,462,122</u> |
| Available to appropriate | 27,494,512 |
| Appropriations for 2006 | <u>26,834,170</u> |
| Unappropriated balance | <u>\$ 660,342</u> |

Revenues are classified by source based upon the county auditor's chart of accounts. Expenditures are classified by object because they better describe the types of payments made and are easier for readers to understand. A description of the major revenue sources and expenditures are summarized in these notes.

The *Schedule of Budgeted and Actual Revenues* includes only the 2006 estimated revenues and does not include prior year cash (carryover) balances that are available. Estimated revenues are revised near year end to comply with financial reporting and legal requirements. A description of the major revenue accounts and explanations are included below.

The revenues in the General Fund are estimated based upon the source from which they are received and are classified in this manner. We also review prior year history as a basis to estimate. A brief description of the major revenue sources and an explanation of them are included below:

Allen County, Ohio
Notes and Explanations to Quarterly Financial Reports
For the Six Month Period Ended June 30, 2006

Real estate taxes are received from the tax paid by owners of real estate in the county. These taxes are distributed to the county in February and August. The February settlement has been received by the county and the county collected 24.21% less in 2006 than in 2005. The primary reason is that the county reallocated a portion of its real estate tax in order to gain the maximum amount of personal property tax reimbursement during the phase out period. The county reallocated .75 mills of its 2.40 inside (or unvoted) mills or one-third toward the retirement of long-term debt. Additional sales tax revenue was credited to the General Fund to make up for the shortage in real estate tax revenue.

Personal property tax revenues are received from taxes paid by those who have a trade or business. It is a tax on machinery and equipment used in manufacturing or other business and inventory used in manufacturing or for resale. Most of it is received by the county primarily in June and October after it is collected from the businesses and the larger share is received in the October settlement. We have received \$145,834 less in 2006 than in 2005, due to a reallocation of this tax to pay debt.

The personal property tax has been eliminated by the Ohio General Assembly and is being phased out. Ohio counties will be reimbursed fully for personal property tax losses through 2010. From 2011-2017, counties will receive progressively less each year until it is phased out in 2017. However, based upon the reallocation of inside millage to pay long-term debt, the county was able to extend the reimbursement until 2017. No new revenue source has been promised to the county once the phase-out is complete. The house trailer tax is collected on trailers that are taxed like real estate.

Rollback reimbursements are received from the state of Ohio for taxes that are discounted at the county level. This offsets the real estate rollback and the tax exempted from personal property.

Sales tax is derived from the 1% additional tax on sales within the county. It is paid into the state by business owners and then sent back to the county about three months later. Sales taxes received in the General Fund in 2006 are 6.63% more than we received in 2005. It should be noted that gross sales tax revenues (before allocation to other funds) are down in 2006 by \$114,550, or 4.3%. This revenue source is affected by market and non-economic conditions and is a primary indicator of business activity.

Transfer taxes and conveyance fees are paid to the county when real estate transactions occur. Two dollars is placed in the General Fund and the rest is distributed by the commissioners to other funds. These are up by 60% this year based upon increased real estate activity.

Local government funds are received from the State of Ohio. This is an important revenue source that was the subject of scrutiny in the state of Ohio budget. The actual allocation was changed in the second half of 2005 and the account will be closely monitored in the future. We have received 2.17% more than in the previous year. This revenue source is frozen until at least June 30, 2007.

Fees are generated from charges by the probate court and recorder. Auditor and treasurer fees are collected from administering the collection and distribution of real estate and personal property taxes to local governments and from other departments.

Licenses primarily consist of a small amount of revenues from the sale of cigarette and vendors licenses. More vendors' licenses were issued after July of 2005, because more industries are required to collect and remit sales taxes to the state. This will not significantly increase revenue from this source however.

Allen County, Ohio
Notes and Explanations to Quarterly Financial Reports
For the Six Month Period Ended June 30, 2006

Interest is collected monthly from investments of the county's cash. If the cash balances grow and interest rates increase, revenues will increase. Interest income has increased by \$409,203 which is an increase of almost 85% from 2005, due primarily to an increase in interest rates paid on investments and other factors.

Sales and rents are primarily collected from the rental of county property such as the county home, the Court of Appeals building and parking lots.

Miscellaneous revenues are derived primarily from election expenses and reimbursements from other sources. This source increased by \$75,226 which is an increase of 9.76%.

Court revenues come from fines and court costs imposed by the Municipal Court, Juvenile Court and other courts that collect these fines and fees.

Detention Center revenues are derived from tuition charges and housing of inmates. The center also receives Federal grant revenue which comes primarily from the Federal National School Breakfast and Lunch program and is used to offset the Juvenile Detention Center food costs.

Transfers in are \$100,000 less than 2005 due to not receiving payments from other county departments.

The *Schedule of Expenditures Compared to Appropriations* shows the relationship between the spending authority (appropriations) of the county and actual spending for the year. Current year appropriations include the encumbrances carried over from 2005, which do not need to be reappropriated, and the current year appropriations. The total expenditures and encumbrances column shows the amount spent and obligated (encumbered) in 2006, against the appropriation accounts. The variance column shows the amount that has not been spent or obligated to date and shows whether there are legal violations of Revised Code provisions. There are none.

Appropriations are approved by the county commissioners based upon requests made by the departments in the General Fund, and other funds, and must be approved before any expenditure can legally be made. Appropriations are limited by the carryover fund balance plus estimated revenues and cannot exceed those amounts. Appropriations include encumbrances carried over from 2005 and the current appropriations for 2006. Encumbrances are obligations that are made for the purchase of goods or services and reduce the available appropriations by that amount in order to reduce the risk of overspending. Appropriations do not exceed the amount available.

Ohio law states that current year expenditures and encumbrances cannot exceed the appropriations referred to above. Appropriations can be modified throughout the year with the approval of the commissioners.

A brief description of expenditure accounts follows:

Salaries include the amounts paid to elected officials and county employees for services provided to the county. Salaries and fringe benefits (the employer share of Medicare, retirement costs, and insurance) account for about 65% of General Fund expenditures. Salaries are up this year by 3.79%.

Insurance includes the county share of hospitalization paid for employees as well as workers compensation and the term life insurance policy provided as a fringe benefit. Insurance costs are up 5.83% from the prior year.

Allen County, Ohio
Notes and Explanations to Quarterly Financial Reports
For the Six Month Period Ended June 30, 2006

The Ohio Public Employee Retirement System includes the county (employer) share of retirement paid for the employees as a fringe benefit and is calculated based upon 13.70% of salaries paid. The county pays 16.93% of the gross salary for law enforcement employees as a fringe benefit. The employee's share of OPERS increased by one-half percent to 9% of their gross income.

Medicare is paid by both the employee and the employer, with each contributing 1.45% of gross pay for those employees hired after April 1, 1986. Unemployment compensation is the county obligation for employees who are laid off. Allen County is a reimbursing employer so premiums are not paid unless employees are laid off.

Materials and supplies include such items as general office supplies, advertising, dues, books, food for detention centers, fuel and maintenance of certain county vehicles, and other items. These expenditures are up by 10.65% from 2005.

Services include certain contracts with vendors for the maintenance and repair of office equipment and vehicles, jury fees, utility bills, liability insurance, travel expenses, and other items. Spending on this line item has increased by 13.82 percent primarily because of increases in indigent defense and liability insurance.

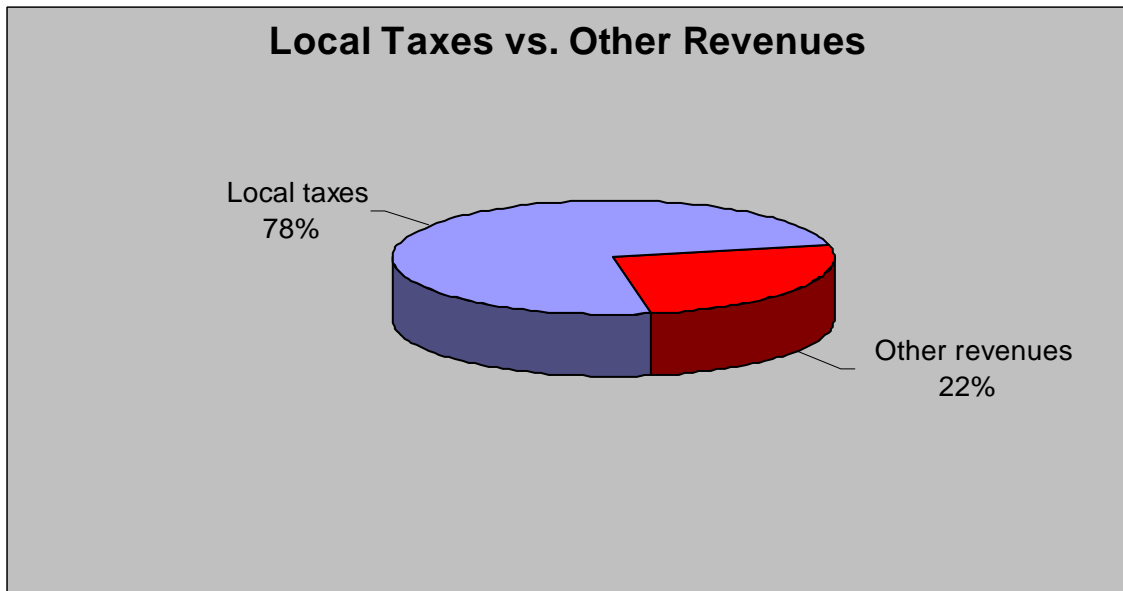
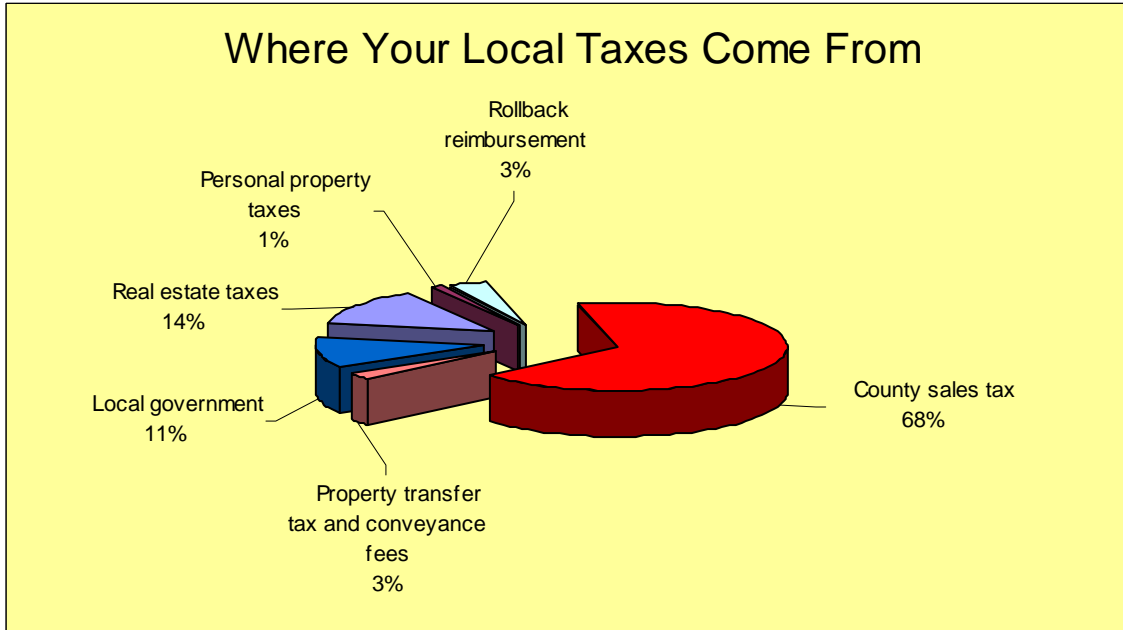
Capital outlay is used to record the purchase of equipment or other assets purchased through the General Fund. Most county purchases of general fixed assets are made from the Building and Repair Fund for vehicles and computer equipment.

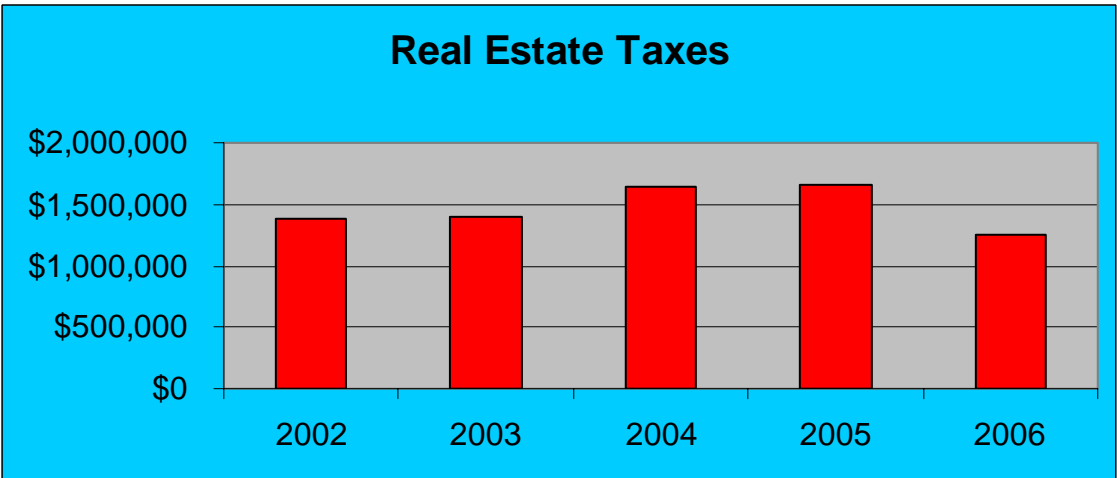
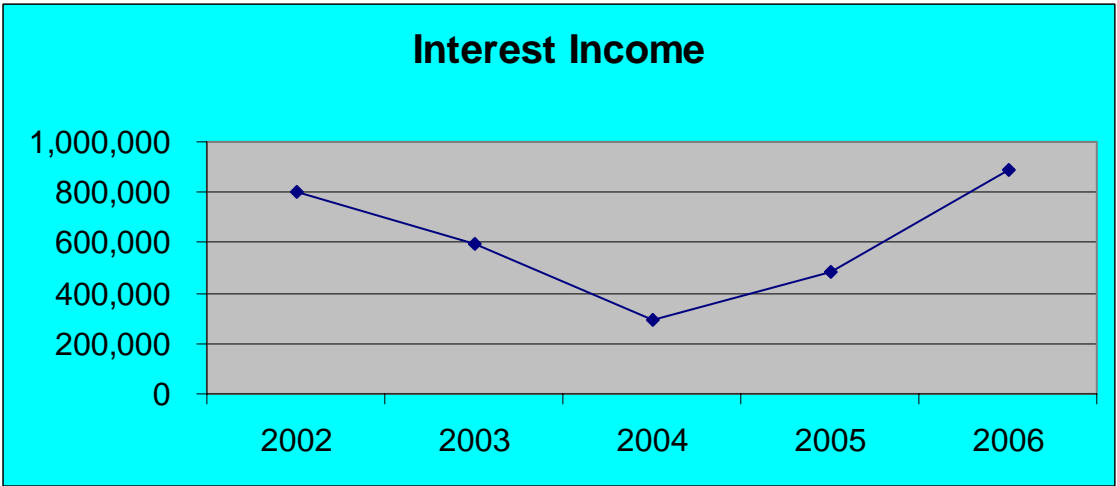
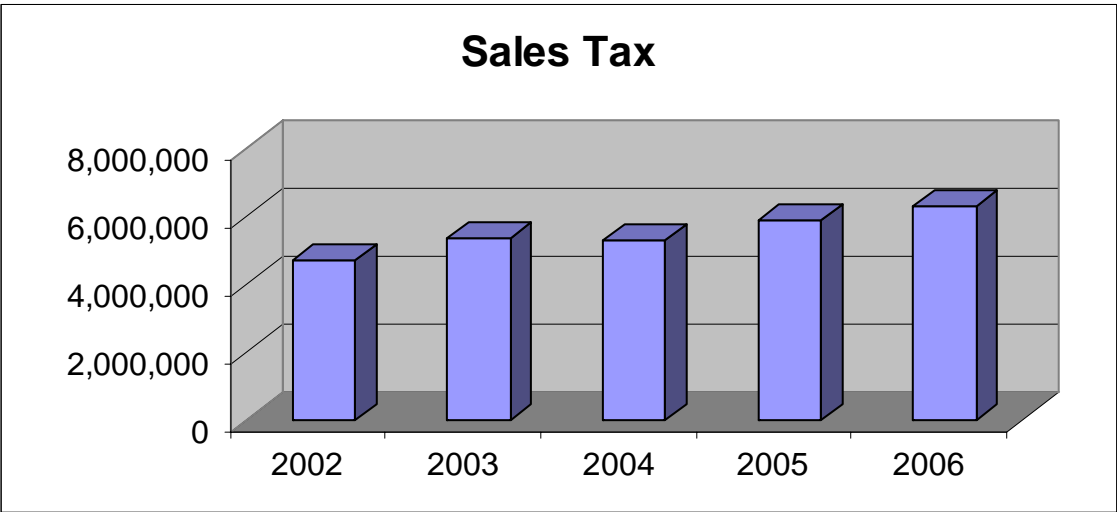
Grants to other county departments include payments made to the Regional Planning Commission, Regional Transit Authority, and Board of Health, veteran services, Airport Authority, Court of Appeals, Crime Victim Services, agricultural-related organizations and others to assist in the funding of their operations. Expenditures for these accounts have increased 2%.

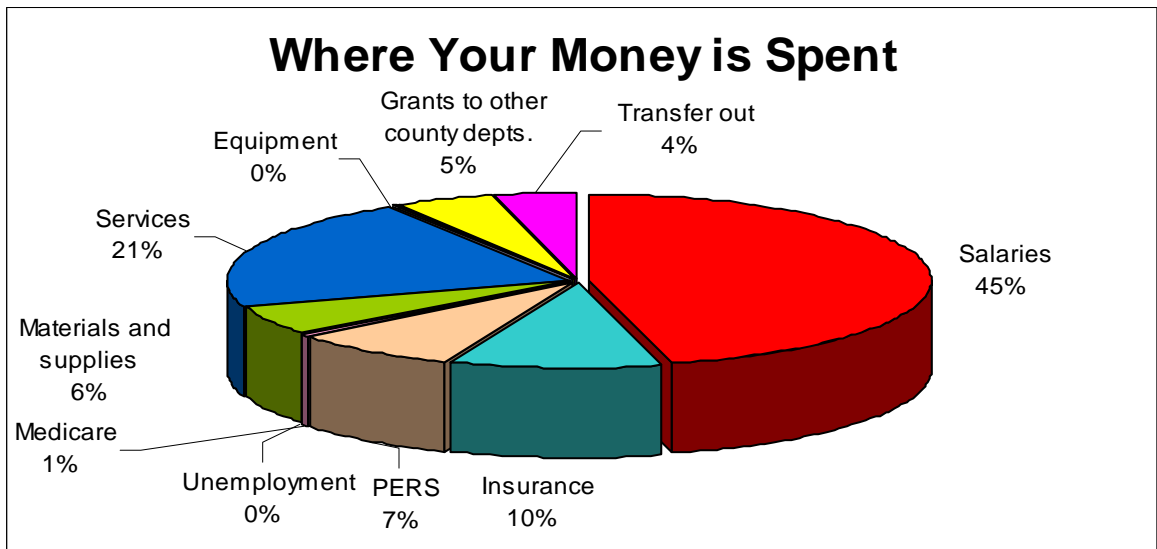
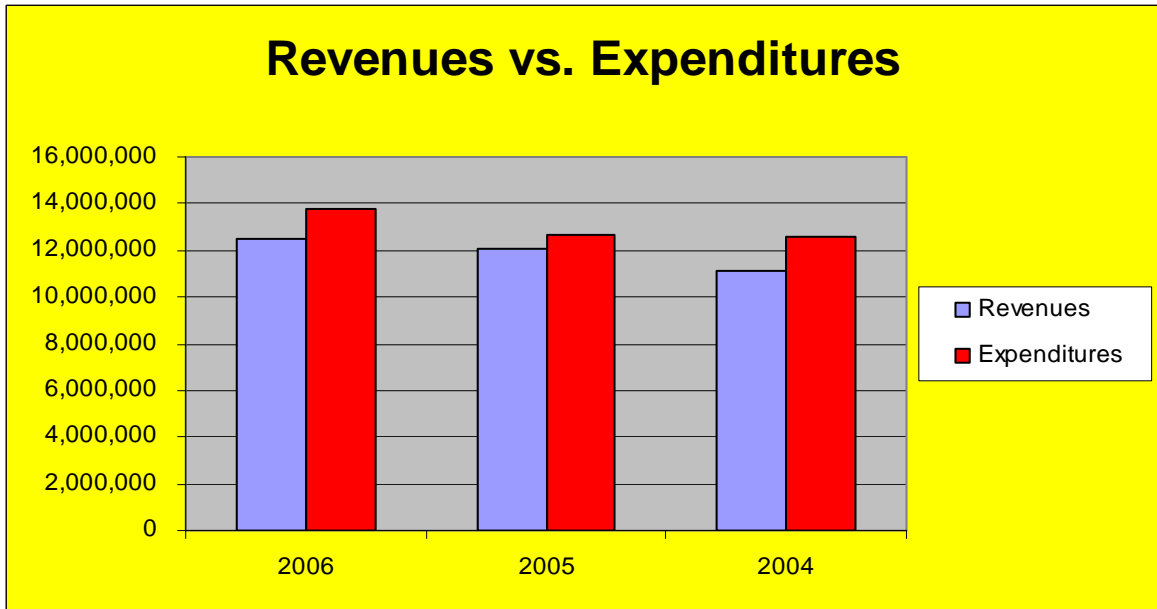
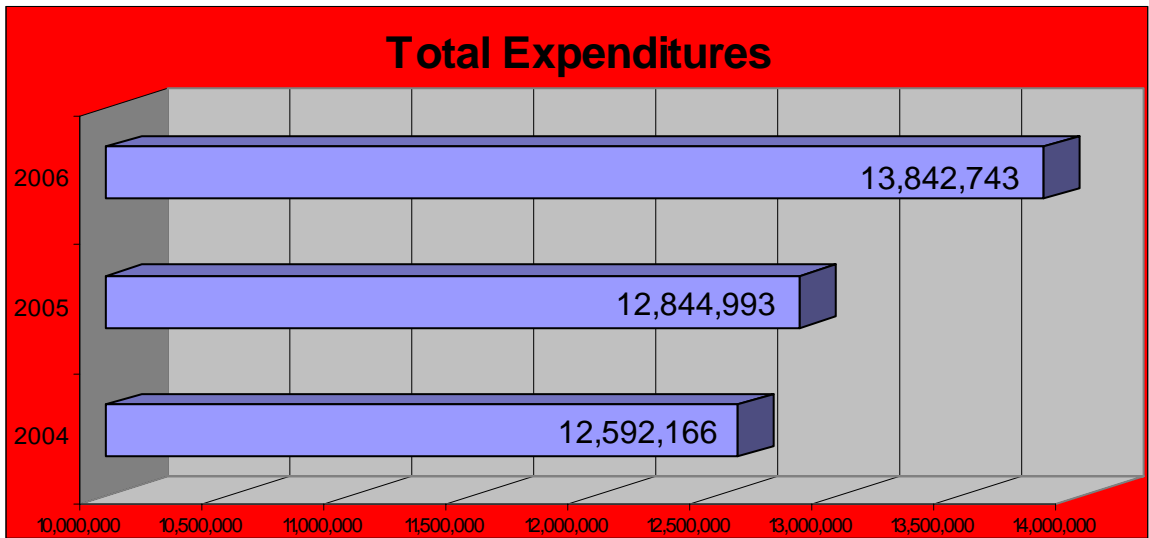
Transfers out primarily consist of the payment of the county's mandated share of public assistance to the County Department of Job and Family Services. Through this period, the county transferred \$289,591 with an additional commitment in the second half of the year of \$318,551 for a total commitment of \$608,142. Transfers to all other departments was \$230,795.

Graphs

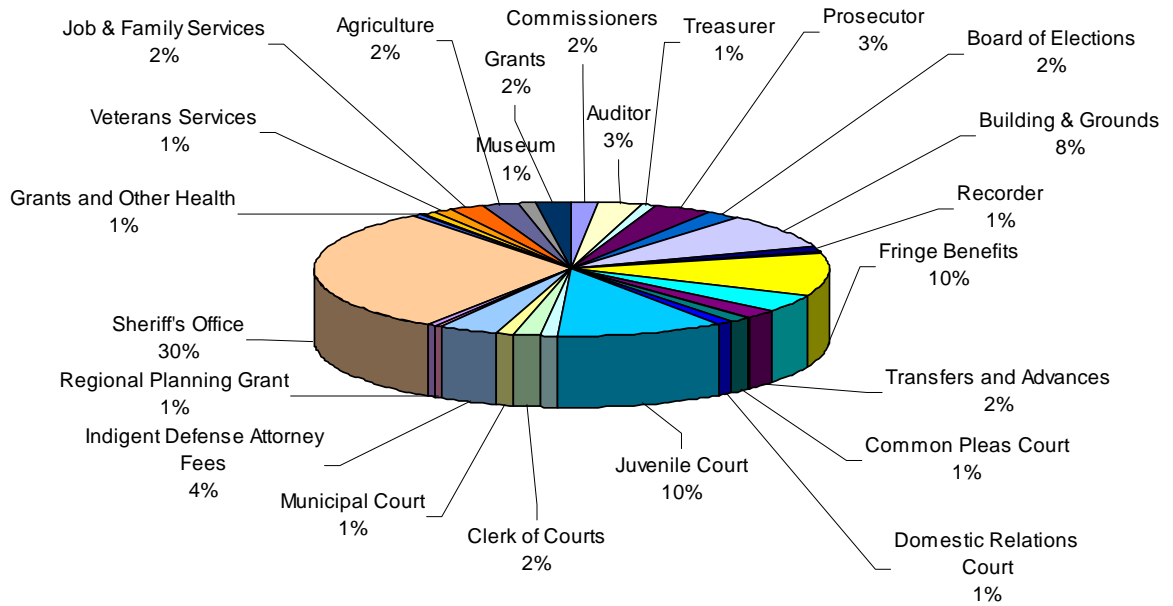
The graphs below depict a few of the main items of the County's General Fund revenue and expenditures. All amounts are for the period of January through June.







Expenditures by Departments



Expenditures By Department
General Fund
For the Six Month Period Ended June 30, 2006

| | |
|--|----------------------------|
| General Legislative & Executive | |
| Commissioners | \$216,434 |
| Allen County Law Library | 13,081 |
| Auditor | 402,703 |
| Treasurer | 114,081 |
| Prosecutor | 482,999 |
| Board of Revision | 9 |
| Bureau of Inspection | 17,246 |
| Board of Elections | 305,147 |
| Building & Grounds | 1,157,880 |
| Recorder | 160,630 |
| Miscellaneous | 47,554 |
| Fringe Benefits (All General Fund Employees) | 1,451,276 |
| Insurance | 577,202 |
| Transfers | 230,795 |
| Advance | 50,000 |
| Total General Legislative & Executive | <u>5,227,037</u> |
| Judicial | |
| Court of Appeals | 32,395 |
| Common Pleas Court | 206,952 |
| Domestic Relations Court | 125,119 |
| Juvenile Court | 1,426,552 |
| Probate Court | 157,966 |
| Clerk of Courts | 259,153 |
| Municipal Court | 121,603 |
| Indigent Defense Attorney Fees | 513,338 |
| Total Judicial | <u>2,843,078</u> |
| Public Safety | |
| Regional Planning Grant | 78,550 |
| Coroner | 71,917 |
| Sheriff's Office | 4,171,543 |
| Grants | 67,516 |
| Total Public Safety | <u>4,389,526</u> |
| Public Works | |
| Tax Map Office | 71,892 |
| Grants | 141,390 |
| Total Public Works | <u>213,282</u> |
| Health | |
| Children's Services Attorney | 28,520 |
| Tuberculosis Care | 2,984 |
| Grants and Other Health | 100,710 |
| Total Health | <u>132,214</u> |
| Human Services | |
| Veterans Services | 171,375 |
| Job & Family Services Mandate | 289,591 |
| Total Human Services | <u>460,966</u> |
| Conservation & Recreation | |
| Agriculture | 327,661 |
| Museum | 154,147 |
| Grants | 94,831 |
| Total Conservation & Recreation | <u>576,639</u> |
| Total General Fund Expenditures | <u><u>\$13,842,742</u></u> |