

AUDITOR'S QUARTERLY NEWSLETTER

SEPTEMBER 2011

3rd QUARTER FINANCIAL HIGHLIGHTS

Revenue:

Compare 2011 to 2010

Total revenue received for the first nine months of 2011 was \$407,547 less than received in the first nine months of 2010 (2.1% less). Highlights include sales tax which is higher by \$357,038 than the same time period last year while interest income is \$292,379 lower than last year. In addition, in 2010 the title department transferred \$250,000 to the general fund and in 2011 only \$100,000.

2011 Budget vs. Actual

The total 2011 revenue budget is \$23,837,071. As of September 30th, we have received 80.81% of the revenue budgeted for a total of \$19,261,731. Upon review of the revenue, I anticipate the general fund will receive more than the original budget amount.

Expenses:

Compare 2011 to 2010

Total expenses for the first nine months of 2011 was \$257,513 more than expensed in the first nine months of 2010 (1.3% more). Highlights include increases in salary and benefits of \$113,721. During the budget process, in the beginning of the year, the commissioners appropriated additional funds which allowed departments to discontinue furloughs. In October, the commissioner reinstated the furloughs and reduced all departmental budgets. Other expenses include 5.2% increase in materials and supplies and 1.54% increase in contract services.

Equipment purchases decreased 22% from 2010.

2011 Budget vs. Actual

The total 2011 expenditure budget approved by the county commissioners is \$25,705,787. As of September 30, the general fund has spent 74.26% of the amount appropriated for a total of \$19,088,989. Current spending patterns predict that it is appropriate to assume a majority of the amount appropriated by the commissioners will be spent in 2011.

SUMMARY:

The beginning cash balance for 2011 was \$4,114,706; Adjusted estimated revenue is \$25,028,924; Appropriated 2011 expenditures: \$25,705,787; Estimated cash balance on 12/31/2011: \$3,437,843.

The following pages (2-5) present the financial condition as of September 30, 2011 in detail. Pages 6 & 7, present the financial condition in graphs and charts.

RESERVE "RAINY DAY" FUND

In addition to the carry over balance, Allen County has a reserve "rainy day" fund with a balance of \$1,266,980.10. The Ohio Revised Code (ORC) allows commissioners to set aside money to be used in times of budget shortfalls. While the county has experienced declining revenue since 2009, the commissioners have chosen to make budget cuts therefore, this fund has been untouched.

CONTACT US:

Allen County Auditor
Rhonda Eddy-Stienecker,
301 N. Main St.
PO Box 1243
Lima, OH 45801
419-228-3700 x5
reddy@allencountyohio.com
www.allencountyohio.com
Facebook: Allen County Auditor

INSIDE THIS ISSUE:

<i>3rd Quarter 2010-2011 Revenue & Expense Reports</i>	2
<i>3rd Quarter 2011 Budget to Actual Revenue & Expense</i>	3
<i>3rd Quarter 2011 Expenses by Department</i>	4-5
<i>3rd Quarter Graphs</i>	6-7



Allen County, Ohio
Statement of Cash Receipts, Disbursements and Changes in Fund Balance
General Fund
For the Nine Month Period Ended September 30, 2011 and 2010

	Actual 2011	Actual 2010	Dollar Variance	Percent Variance
Revenues:				
County sales tax	10,495,402	10,138,364	357,038	3.52%
Property taxes	2,556,341	2,576,910	(20,569)	-0.80%
Interest	385,832	678,211	(292,379)	-43.11%
Charges for services	2,897,558	2,831,100	66,458	2.35%
Licenses	6,723	3,780	2,943	77.86%
Fines, forfeitures, and court cost	124,994	151,972	(26,978)	-17.75%
Local government fund	1,259,604	1,226,107	33,497	2.73%
Intergovernmental	687,878	1,012,537	(324,659)	-32.06%
Rent	573,670	570,281	3,389	0.59%
Miscellaneous and reimbursements	55,439	42,737	12,703	29.72%
Total General Fund revenue	<u>19,043,441</u>	<u>19,231,998</u>	<u>(188,557)</u>	<u>-0.99%</u>
Expenditures:				
Salaries and benefits	13,177,375	13,063,654	113,721	0.87%
Materials and supplies	945,120	898,324	46,797	5.21%
Contracts and services	3,948,316	3,888,567	59,749	1.54%
Equipment	41,260	53,300	(12,040)	-22.59%
Miscellaneous			0	
Total General Fund Expenditures	<u>18,112,072</u>	<u>17,903,845</u>	<u>208,227</u>	<u>1.15%</u>
Excess of revenues over expenditures	931,369	1,328,153	(396,784)	
Other financing sources (uses):				
Sale of Fixed Assets	718	21	697	3317.67%
Other financing source	100,698	157,505	(56,807)	-36.07%
Other financing Use	(9,107)	(92,887)	83,780	-90.20%
Transfer In	100,000	250,000	(150,000)	-60.00%
Transfer out	(791,645)	(834,744)	43,099	-5.16%
Advance in	16,874	29,754	(12,880)	-43.29%
Advance out	(176,166)	0	(176,166)	0.00%
Total other financing sources (uses)	<u>(758,628)</u>	<u>(490,351)</u>	<u>(268,277)</u>	<u>-93.47%</u>
Excess of revenues and other financing sources over expenditures and other financing uses	172,742	837,802	(665,060)	-79.38%
Beginning fund balance, Jan 1, 2011 and 2010	4,114,707	3,501,111	613,596	17.53%
Ending fund balance, Sept 30, 2011 and 2010	<u>4,287,449</u>	<u>4,338,913</u>	<u>(51,465)</u>	<u>-1.19%</u>
Outstanding encumbrances	(1,236,522)	(1,582,922)	346,399	-21.88%
Unencumbered fund balance, Sep30, 2011 and 2010	<u>3,050,926</u>	<u>2,755,992</u>	<u>294,934</u>	<u>10.70%</u>

This is an unaudited financial statement.



2011 GENERAL FUND REVENUE
BUDGET VS ACUTAL
For the Nine Month Period Ended September 30, 2011

	Annual Budgeted Revenues	Total Receipt for 2011	Variance Favorable (Unfavorable)	% Received To Date
Revenues:				
County sales tax	13,530,000	10,495,402	\$3,034,598	77.57%
Property taxes	2,517,000	2,556,341	(\$39,341)	101.56%
Interest	600,000	385,832	\$214,168	64.31%
Charges for services	3,361,520	2,897,558	\$463,962	86.20%
Licenses	6,030	6,723	(\$693)	111.49%
Fines, forfeitures, and court cost	220,000	124,994	\$95,006	56.82%
Local government fund	1,593,860	1,259,604	\$334,256	79.03%
Intergovernmental	901,203	687,878	\$213,325	76.33%
Rent	813,958	573,670	\$240,288	70.48%
Miscellaneous and reimbursements	56,000	55,439	\$561	99.00%
Other Financing Sources	117,000	100,698	\$16,302	86.07%
Sale of Fixed Assets	500	718	(\$218)	143.54%
Transfers In	100,000	100,000	\$0	100.00%
Advance In	20,000	16,874	\$3,126	84.37%
Total General Fund revenues	\$23,837,071	\$19,261,731	\$4,575,341	80.81%

Target % as of 9/30 75%

2011 GENERAL FUND EXPENSES
BUDGET VS. ACTUAL
For the Nine Month Period Ended September 30, 2011

	Annual Budgeted Appropriations	Total Expenditures 2011	Variance Favorable (Unfavorable)	% Spent To Date
Expenditures				
Salaries and benefits	\$17,440,728	13,177,375	4,263,353	75.56%
Materials and supplies	1,317,032	945,120	371,912	71.76%
Contracts and services	5,259,689	3,948,316	1,311,373	75.07%
Equipment	60,717	41,260	19,456	67.96%
Miscellaneous	31,000	9,107	21,893	29.38%
Transfers out	1,420,456	791,645	628,811	55.73%
Advances out	176,166	176,166	0	100.00%
Total expenditures	\$25,705,787	\$19,088,989	\$6,616,798	74.26%

Target % as of 9/30 75%



**Schedule of Expenditures By Department
General Fund
For the Nine Month Period Ended September 30, 2011**

	2011	% of Total
General Legislative & Executive		
Commissioners	\$271,436	1.4%
Building & Grounds	1,598,693	8.4%
Auditor - Accounting/Weights & Measures	242,102	1.3%
Auditor - Information Technology	188,023	1.0%
Treasurer	148,773	0.8%
Prosecutor	852,524	4.5%
Bureau of Inspection	76,856	0.4%
Board of Elections - General	297,989	1.6%
Board of Elections - Election Day Expense	116,288	0.6%
Recorder - General	182,670	1.0%
Recorder - Microfilm	25,743	0.1%
Total General Legislative & Executive	4,001,096	21.0%
Judicial & Public Safety		
Clerk of Courts	345,173	1.8%
Common Pleas Court	281,942	1.5%
Coroner	108,206	0.6%
Court of Appeals	30,985	0.2%
Domestic Relations Court	217,797	1.1%
Indigent Defense Attorney Fees	421,632	2.2%
Juvenile Court	1,245,047	6.5%
Juvenile Detention Center	710,140	3.7%
Municipal Court	112,929	0.6%
Probate Court	229,775	1.2%
Public Defender	128,898	0.7%
Sheriff's Office	3,860,078	20.2%
Sheriff's Office - Jail Operations	2,575,662	13.5%
Total Judicial & Public Safety	10,268,263	53.8%
Health & Public Works		
Tax Map Office	95,850	0.5%
Tuberculosis Care	3,691	0.0%
Other Health	198,674	1.0%
Total Health	298,215	1.6%



**Schedule of Expenditures By Department
General Fund
For the Nine Month Period Ended September 30, 2011**

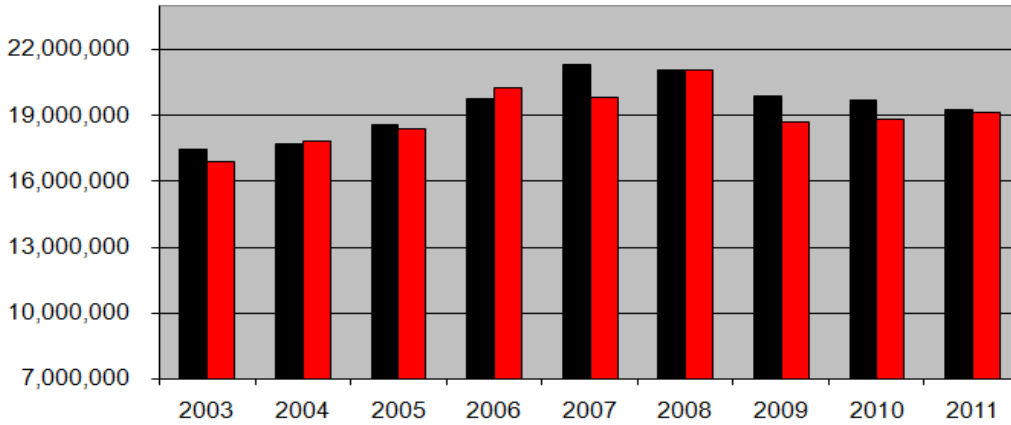
	<u>2011</u>	<u>% of Total</u>
Human Services		
Veterans Services	189,064	1.0%
Veterans Assistances	119,136	0.6%
Job & Family Services Mandate	462,649	2.4%
Total Human Services	<u>770,849</u>	<u>4.0%</u>
Grants & Recreation		
Apiar Inspection	611	0.0%
Agricultural Society - Allen County Fair	2,800	0.0%
Soil Conservation - Soil & Water	24,000	0.1%
Stormwater Coordinator	44,000	0.2%
Phase II Stormwater Coordinator	11,800	0.1%
Civic Center Operations	0	0.0%
Allen County Citizens Review Board	2,325	0.0%
Airport Authority	74,696	0.4%
Regional Planning Commission	81,386	0.4%
Farm Land Expense	0	0.0%
Co-Op Extension	25,000	0.1%
Museum	177,354	0.9%
Total Conservation & Recreation	<u>443,973</u>	<u>2.3%</u>
Other Expenses		
Miscellaneous	283,993	1.5%
Fringe Benefits (All General Fund Employees)	1,826,484	9.6%
Insurance	690,955	3.6%
Transfers	328,996	1.7%
Advance	176,166	0.9%
Total Other Expenses	<u>3,306,594</u>	<u>17.3%</u>
Total General Fund Expenditures	<u><u>\$19,088,989</u></u>	<u><u>100.0%</u></u>



Revenues vs. Expenditures

Data represents first 9 months for each year

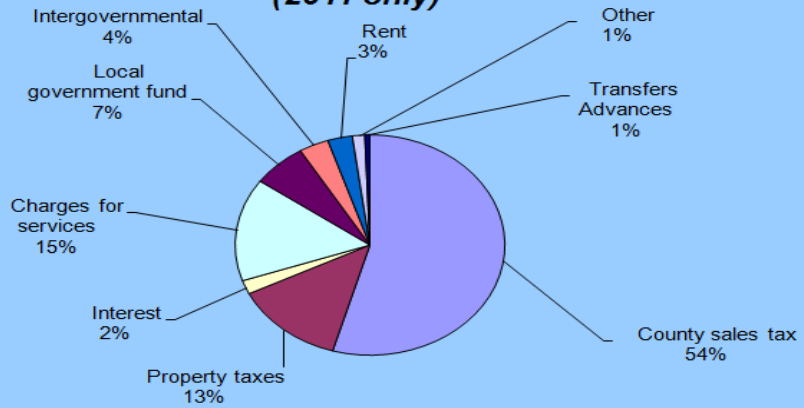
■ Revenues
■ Expenditures



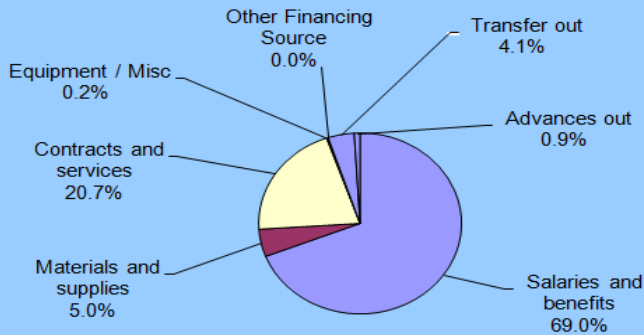
See page 2 for additional detail. The graph shows the revenue is currently at pre 2006 levels. Revenue is down 9.20% since 2008 and expenses have been reduced by 10.14% since 2008.

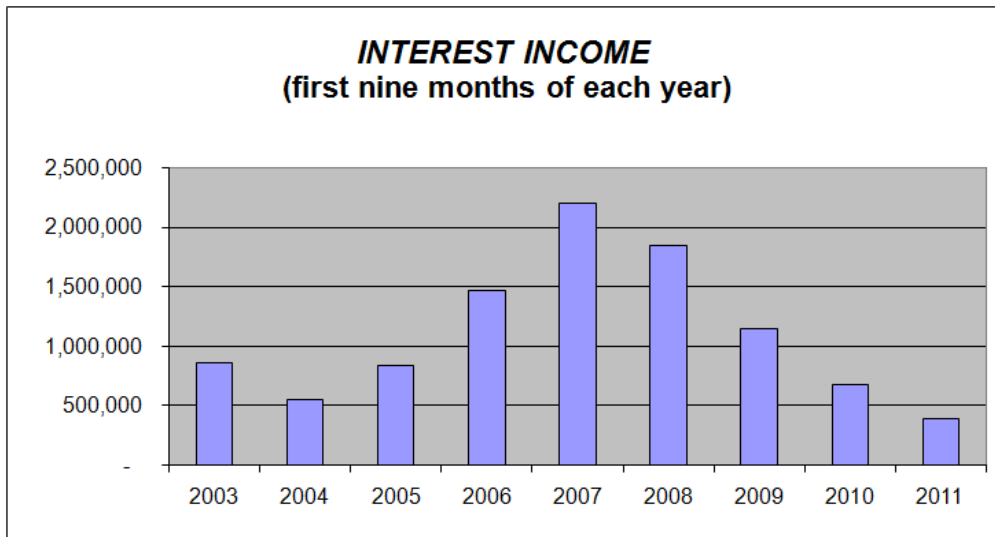
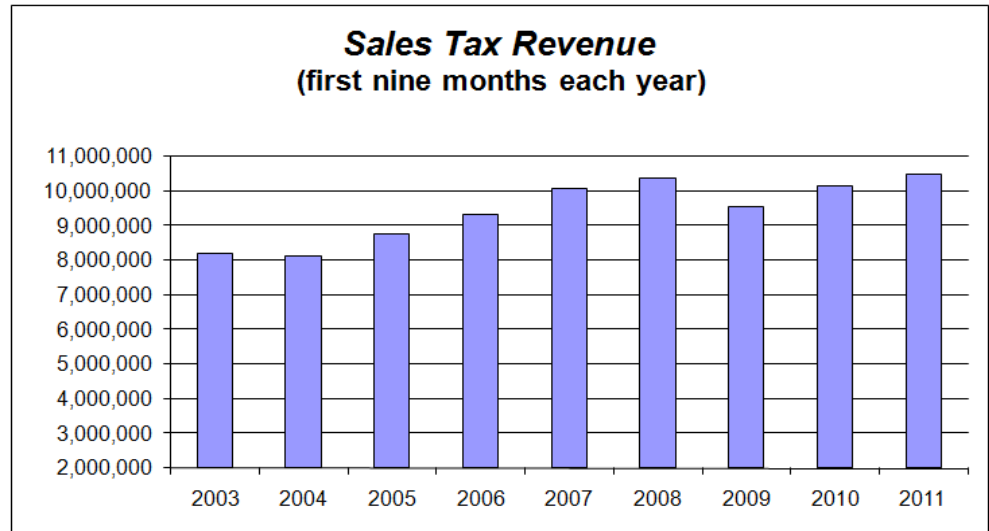
Local Government Funds (received from the State) are 7% of the total budget. This revenue has been cut by 25% (in the last six months) of 2011 and will be cut by 50% in 2012. The county will need to find other revenue or additional cuts will take place in 2012.

Sources of Revenue (2011 only)



How Your Money Is Spent (2011 only)





See pages 4-5 for the detail on breakdown of departmental expenses.

