

LOW PRESSURE PUMP SYSTEM WHEN YOU NEED TO CALL FOR INSPECTIONS

1. The E-One pump station must be inspected before it is backfilled. Call the Sanitary Engineering Department at least **24 hours prior** to when the inspection is needed (*ballast must be exposed to ensure it is properly anchored in concrete*).
2. Service lateral/force main must be inspected before backfill. Call the Sanitary Engineering Department at least **24 hours prior** to when the inspection is needed.
3. The E-One pump station electrical work must be inspected by the Sanitary Engineering Department. Call the Sanitary Engineering Department at least **24 hours prior** to when the inspection is needed.
4. The Sanitary Engineering Department will make the hot-tap on the low-pressure sewer main once the main is properly exposed. Call the Sanitary Engineering Department **48 hours prior** to when the hot-tap is needed. **Steps 1, 2, and 3 must be completed and inspected before our department will perform a hot-tap.**
5. The E-One pump station must be started up by the Sanitary Engineering Department after the electrical work is inspected and approved. Call the Sanitary Engineering Department at least **24 hours prior** to when the start-up is needed.

*E-One pump may be picked up from ACSE Department between 7:30a.m. and 3:30p.m. Monday-Friday. Please call ahead so it will be ready for pickup.

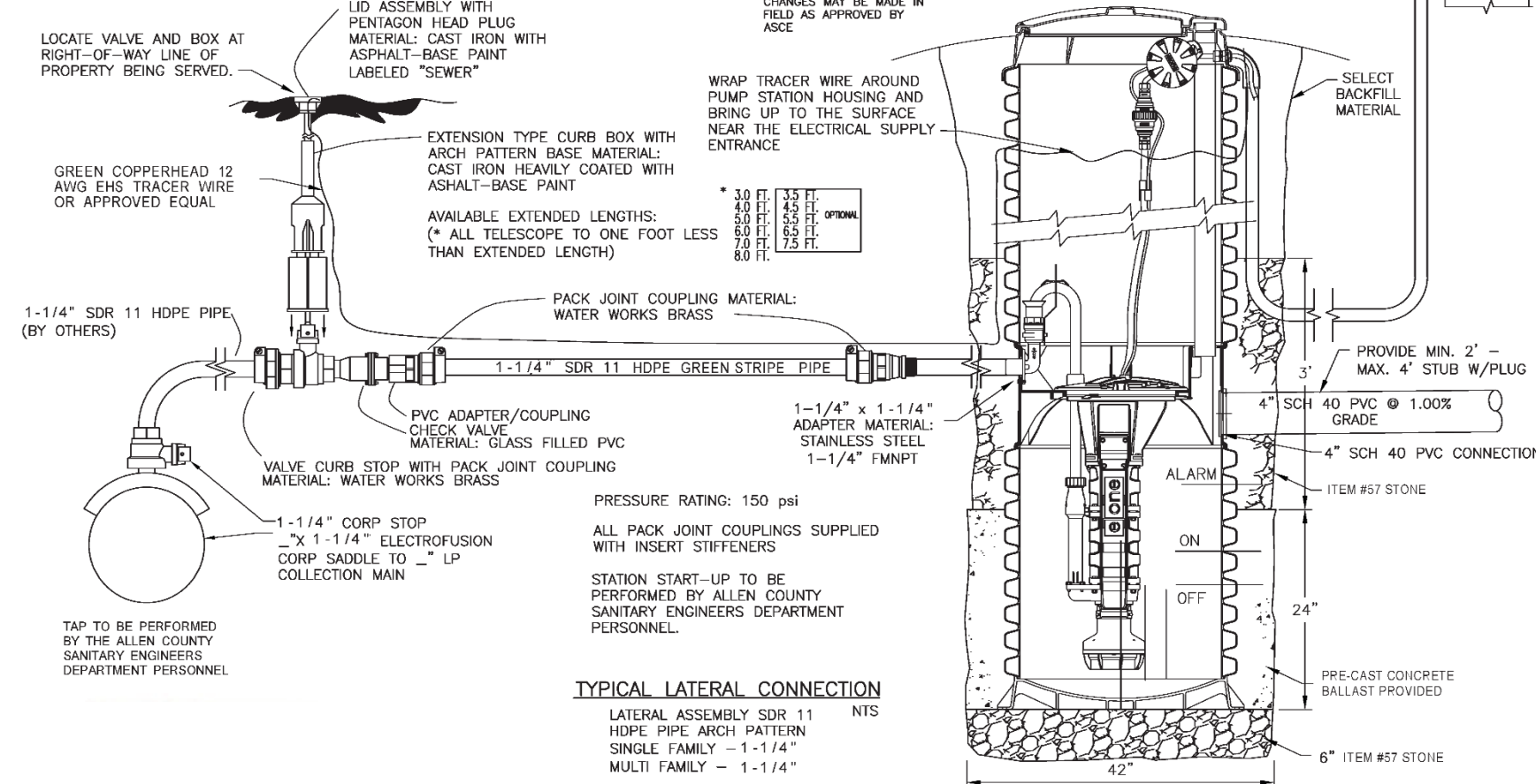
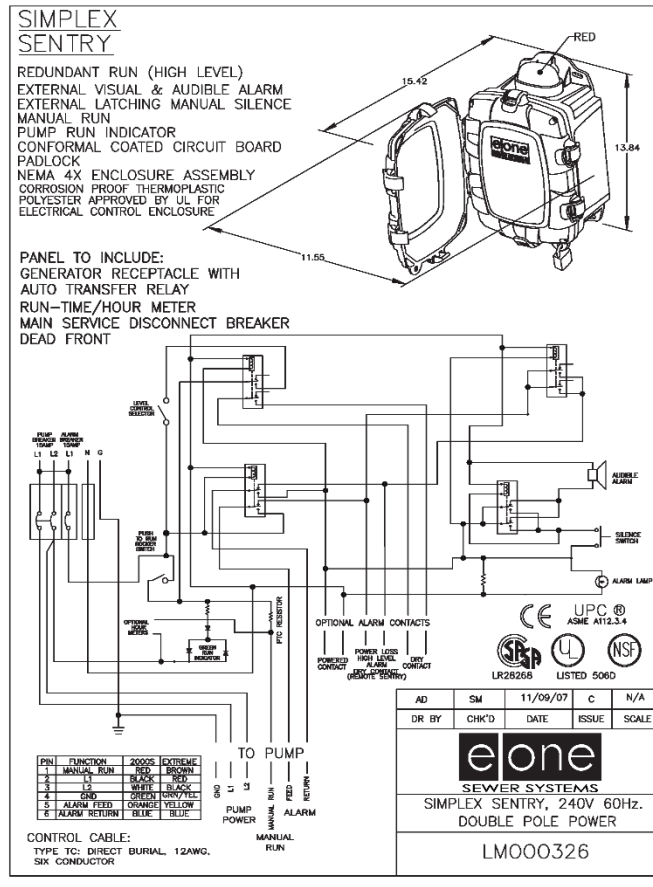
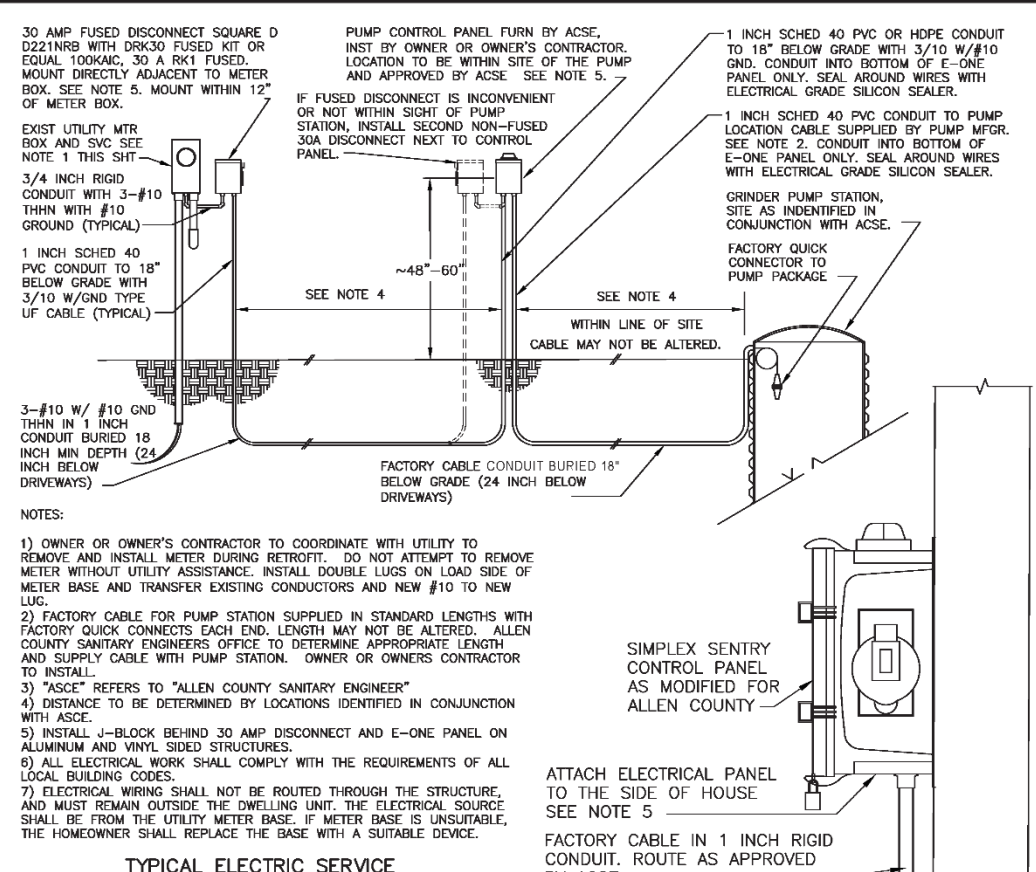
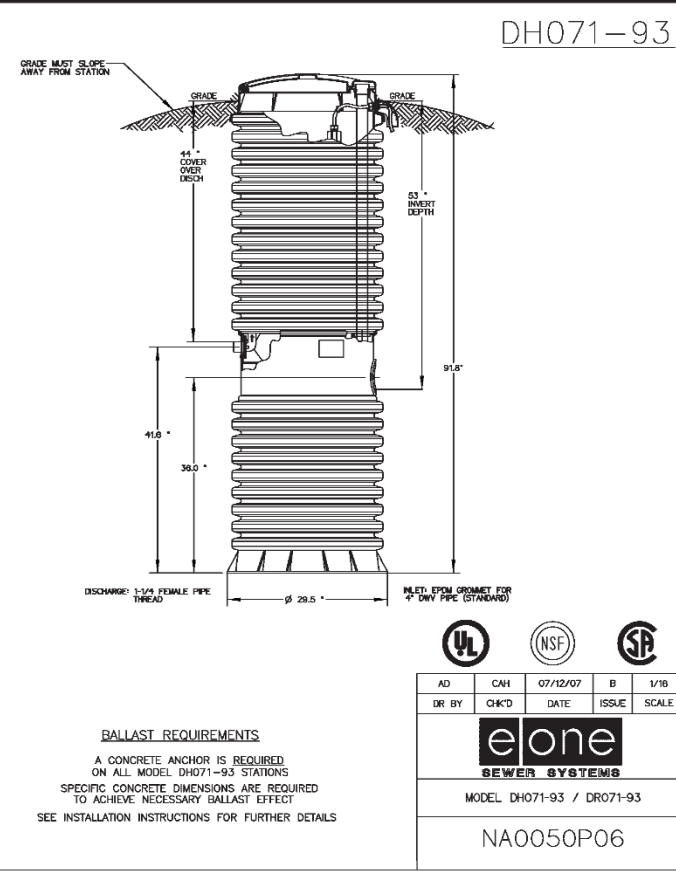
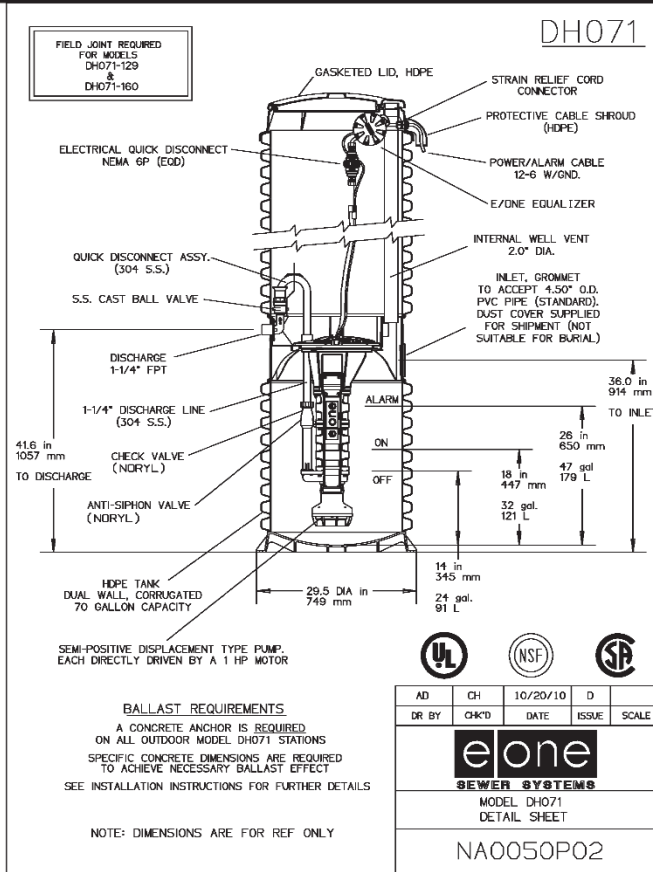
**No work will be approved by the Sanitary Engineering Department without a permit being obtained from our office prior to any sanitary sewer related work being done.



INSTALLATION REQUIREMENTS FOR LOW PRESSURE PUMP SYSTEM SINGLE FAMILY RESIDENCE See Drawing GPD 1.0

1. House lateral to be 4" Sch 40 PVC
ASTM D 1785 - PVC Sch 40 pressure rated
ASTM D 2665 - PVC Drain, Waste and
Vent Pipe
2. Electric service to be 240v / 1ph / 60 Hz to the pump location.
3. Builder to contact Allen County Sanitary Engineering Department 48 hours or 2 working days before work to schedule.
4. When ordering, the Builder is to determine:
 - a. Depth of cover over 4" inlet sewer.
 - b. Length of type TC direct-bury cable required between pump unit and alarm panel.
5. Bill of Materials:
 - a. E-One Model DH071 pump
unit. 4" inlet for 4" Sch 40
PVC pipe
1 1/4" female NPT threaded outlet
 - b. MOD-250-1 alarm panel
 - c. 30amp fused disconnect (#10AWG-4 wire:2 pwr, neutral, & ground)
 - d. Type TC direct bury electric cable to service pumps
 - e. 1 1/4" x 1 1/4" Stainless Steel bushings
 - f. 1 1/4" DR 11 HDPE (green stripe or solid green pipe) for discharge force main
 - g. Service Lateral Kit for 1 1/4" SDR 11
HDPE Pipe Valve Box to be plastic
 - h. Copperhead #12 AWG EHS green tracer wire or equal installed with 1 1/4" force main between the pump and the pressure main.
 - i. Corporation stop with corporation saddle provided by ACSE Department
 - j. E-One Pump Station purchased through ACSE Department at the time a permit is obtained. Call 419-996-4670 for pricing information.
6. Pump Start-up
 - a. Electrical work to be completed before pump start-up can be scheduled.*
***Refer to diagram inside E-1 panel**
 - b. ACSE Department to initiate and complete the start-up of the pump installation.
7. Easement to be granted to ACSE Department by property owner for operation and maintenance of pump station and electrical.

CAUTION: DO NOT ALTER PANEL OR ANY PART OF THE TANK OR COMPONENTS



AGENCY: SANITARY ENGINEERING DEPARTMENT ALLEN COUNTY, OHIO

PROJECT: SINGLE FAMILY RESIDENTIAL LP SANITARY COLLECTION

SUBJECT: STANDARD DRAWING NO. GPD 1.0

DATE: 05-04-17 DRAWING NO.

D:\PACSES\Sanitary\GUNDER PUMP DETALS 1.dwg; DETAIL 22424, 6/20/2017 8:19:00 AM