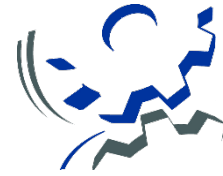




Stephen M. Kayatin, P.E.
Sanitary Engineer

Sanitary Engineering Department

3230 N. Cole Street, Lima, Ohio 45801
Tel: (419) 996-4670 ♦ Fax: (419) 229-3297
Website: <http://www.allencountyohio.com/sanitary-engineering/>



Stephen M. Kayatin, P.E.
Sanitary Engineer

Sanitary Engineering Department

3230 N. Cole Street, Lima, Ohio 45801
Tel: (419) 996-4670 ♦ Fax: (419) 229-3297
Website: <http://www.allencountyohio.com/sanitary-engineering/>



LOW PRESSURE PUMP SYSTEM WHEN YOU NEED TO CALL FOR INSPECTIONS

1. The E-One pump station must be inspected before it is backfilled. Call the Sanitary Engineering Department at least **24 hours prior** to when the inspection is needed.
2. Service lateral/force main must be inspected before backfill. Call the Sanitary Engineering Department at least **24 hours prior** to when the inspection is needed.
3. The E-One pump station electrical work must be inspected by the Sanitary Engineering Department. Call the Sanitary Engineering Department at least **24 hours prior** to when the inspection is needed.
4. The Sanitary Engineering Department will make the hot-tap on the low-pressure sewer main once the main is properly exposed. Call the Sanitary Engineering Department **48 hours prior** to when the hot-tap is needed. **Steps 1, 2, and 3 must be completed and inspected before our department will perform a hot-tap.**
5. The E-One pump station must be started up by the Sanitary Engineering Department after the electrical work is inspected and approved. Call the Sanitary Engineering Department at least **24 hours prior** to when the start-up is needed.

*We order the E-One pump when a permit is purchased and it typically takes 2 weeks before we receive it. The E-One pump may be picked up from ACSE Department between 7:30a.m. and 3:30p.m. Monday-Friday. Please call ahead so it will be ready for pickup.

**No work will be approved by the Sanitary Engineering Department without a permit being obtained from our office prior to any sanitary sewer related work being done.

INSTALLATION REQUIREMENTS FOR

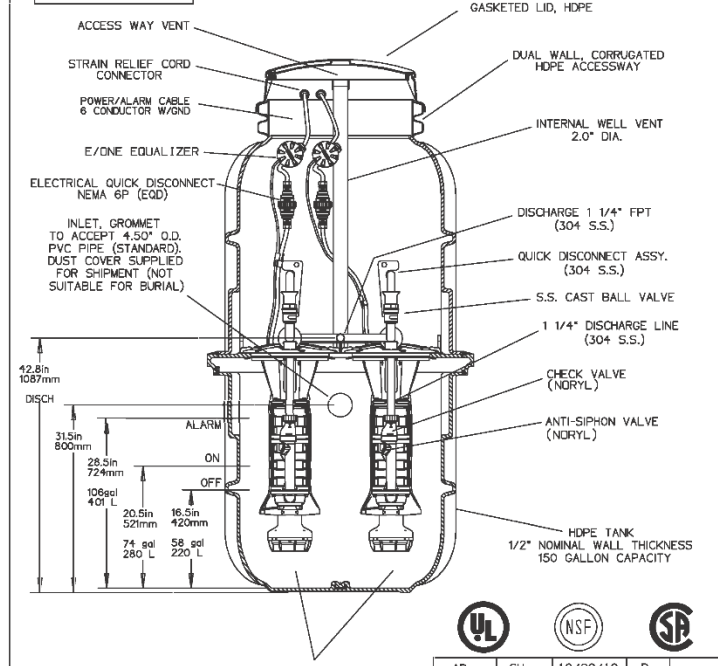
LOW PRESSURE PUMP SYSTEM SERVING **MULTIPLE FAMILY RESIDENCES/COMMERCIAL/INDUSTRIAL**

See Drawing GPD 2.0

1. Service lateral to be 6" Schedule 40 PVC or SDR 35 PVC
ASTM D 1785 – PVC Schedule 40 – pressure rated
ASTM D 2665 – PVC Drain, Waste and Vent Pipe
ASTM D 3034 – SDR 35 PVC
2. Electric service to be 240v / 1ph / 60 Hz to the pump location.
3. Contractor to contact Allen County Sanitary Engineering Department 48 hours before scheduling start-up.
4. When ordering, the Contractor to determine:
 - a. Depth of cover over 6" inlet sewer.
 - b. Lengths of type TC direct bury cable required between pump unit and alarm panel.
5. Bill of Materials:
 - a. One of following E-One pumps or approved equal by ACSE Dept.:
DH 152-150 gallon tank capacity – 2 to 12 homes
DH 272-275 gallon tank capacity – 13 to 20 homes
DP 502-500 gallon tank capacity – 21 to 24 homes
6" inlet for 6" Schedule 40 PVC pipe
1/4" female NPT threaded outlet
 - b. Duplex MOD-260-1 alarm panel
 - c. Type TC direct bury electric cable to service pumps
 - d. 1/4" x 1/4" Stainless Steel bushings
 - e. 1/4" DR 11 HDPE (green stripe or solid green pipe) for discharge force main
 - f. Service Lateral Kit for 1/4" SDR 11 HDPE Pipe
Valve Box to be plastic
 - g. Copperhead #12 solid green tracer wire installed with 1/4" force main between the pump and the pressure main.
 - h. Corporation stop w/corporation saddle provided by ACSE Dept.
 - i. **E-One Pump Station purchased through ACSE Department at the time a permit is obtained. Call 419-996-4670 for pricing information.**
6. Pump Start-up
 - a. Electrical work to be completed before pump start-up can be scheduled.
 - b. ACSE Dept. to initiate and complete the start-up of the pump installation.

DH152

FIELD JOINT REQUIRED FOR MODELS DH152-129 & DH152-160



SEMI-POSITIVE DISPLACEMENT TYPE PUMP EACH DIRECTLY DRIVEN BY A 1 HP MOTOR



AD	CH	10/20/10	D	
DR BY	CHK'D	DATE	ISSUE	SCALE



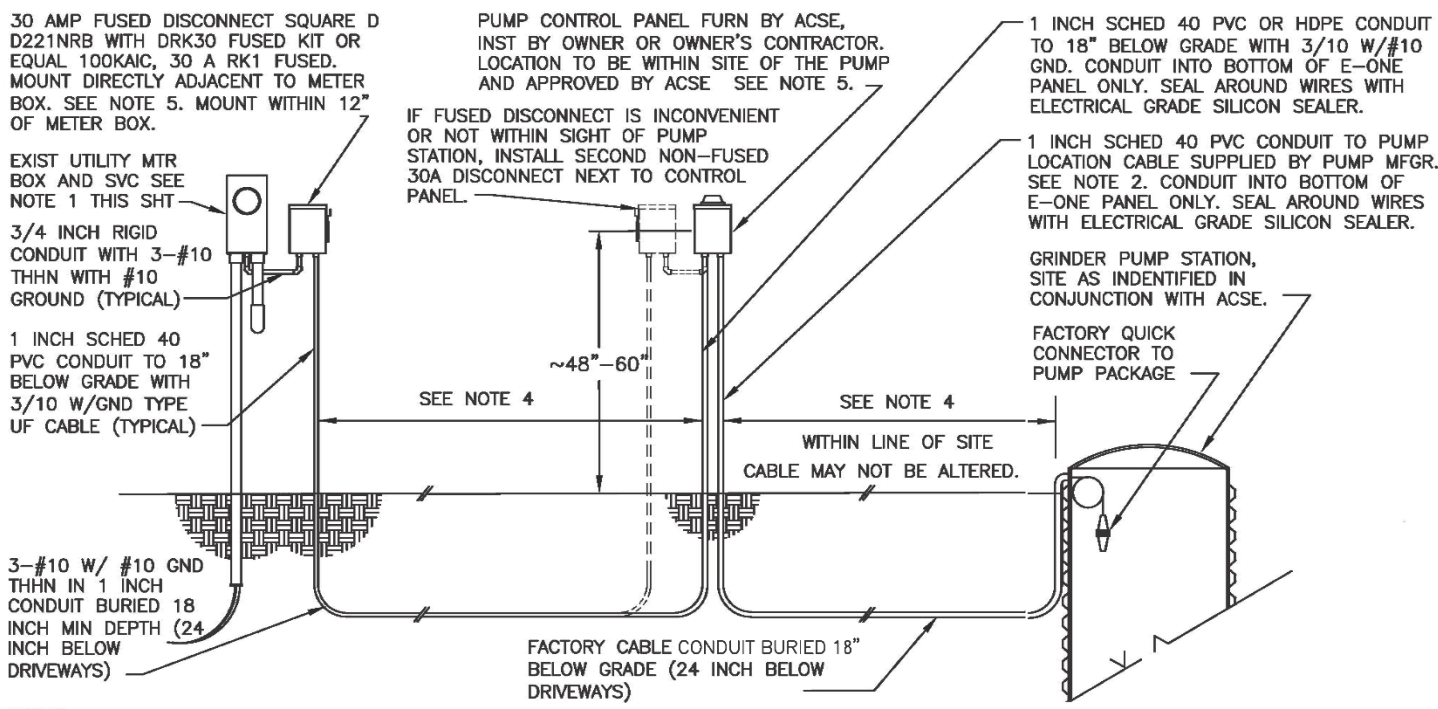
MODEL DH152
DETAIL SHEET

NA0052P02

BALLAST REQUIREMENTS

A CONCRETE ANCHOR IS REQUIRED ON ALL OUTDOOR MODEL DH152 STATIONS. SPECIFIC CONCRETE DIMENSIONS ARE REQUIRED TO ACHIEVE NECESSARY BALLAST EFFECT. SEE INSTALLATION INSTRUCTIONS FOR FURTHER DETAILS.

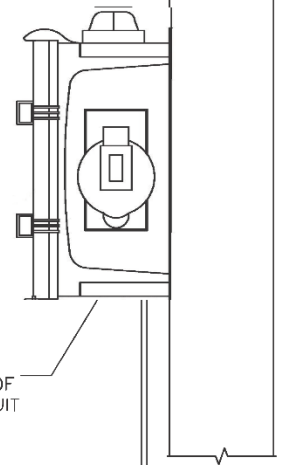
CAUTION: DO NOT ALTER PANEL OR ANY PART OF THE TANK OR COMPONENTS



NOTES:

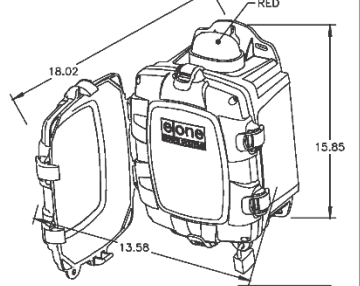
- 1) OWNER OR OWNER'S CONTRACTOR TO COORDINATE WITH UTILITY TO REMOVE AND INSTALL METER DURING RETROFIT. DO NOT ATTEMPT TO REMOVE METER WITHOUT UTILITY ASSISTANCE. INSTALL DOUBLE LUGS ON LOAD SIDE OF METER BASE AND TRANSFER EXISTING CONDUCTORS AND NEW #10 TO NEW LUG.
- 2) FACTORY CABLE FOR PUMP STATION SUPPLIED IN STANDARD LENGTHS WITH FACTORY QUICK CONNECTS EACH END. LENGTH MAY NOT BE ALTERED. ALLEN COUNTY SANITARY ENGINEERS OFFICE TO DETERMINE APPROPRIATE LENGTH AND SUPPLY CABLE WITH PUMP STATION. OWNER OR OWNERS CONTRACTOR TO INSTALL.
- 3) "ACSE" REFERS TO "ALLEN COUNTY SANITARY ENGINEER"
- 4) DISTANCE TO BE DETERMINED BY LOCATIONS IDENTIFIED IN CONJUNCTION WITH ACSE.
- 5) INSTALL J-BLOCK BEHIND 30 AMP DISCONNECT AND E-ONE PANEL ON ALUMINUM AND VINYL SIDED STRUCTURES.
- 6) ALL ELECTRICAL WORK SHALL COMPLY WITH THE REQUIREMENTS OF ALL LOCAL BUILDING CODES.
- 7) ELECTRICAL WIRING SHALL NOT BE ROUTED THROUGH THE STRUCTURE, AND MUST REMAIN OUTSIDE THE DWELLING UNIT. THE ELECTRICAL SOURCE SHALL BE FROM THE UTILITY METER BASE. IF METER BASE IS UNSUITABLE, THE HOMEOWNER SHALL REPLACE THE BASE WITH A SUITABLE DEVICE.

DUPLEX SENTRY CONTROL PANEL AS MODIFIED FOR ALLEN COUNTY



DUPLEX ALTERNATING PANEL T-260

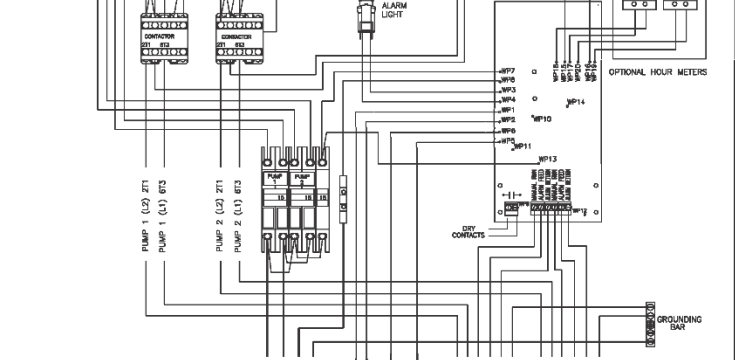
EXTERNAL VISUAL & AUDIBLE ALARM
EXTERNAL LATCHING MANUAL SILENCE
MANUAL RUN
PUMP RUN INDICATORS
CONFORMAL COATED CIRCUIT BOARD
PADLOCK
ALARM DRY CONTACT
NEMA 4X ENCLOSURE ASSEMBLY



CORROSION PROOF THERMOPLASTIC POLYESTER APPROVED BY UL FOR ELECTRICAL CONTROL ENCLOSURE

OPTIONS:

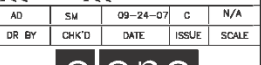
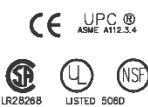
HOUR METER



LEGEND

FROM CORE
SUPPLY CABLE
FACTORY INSTALLED

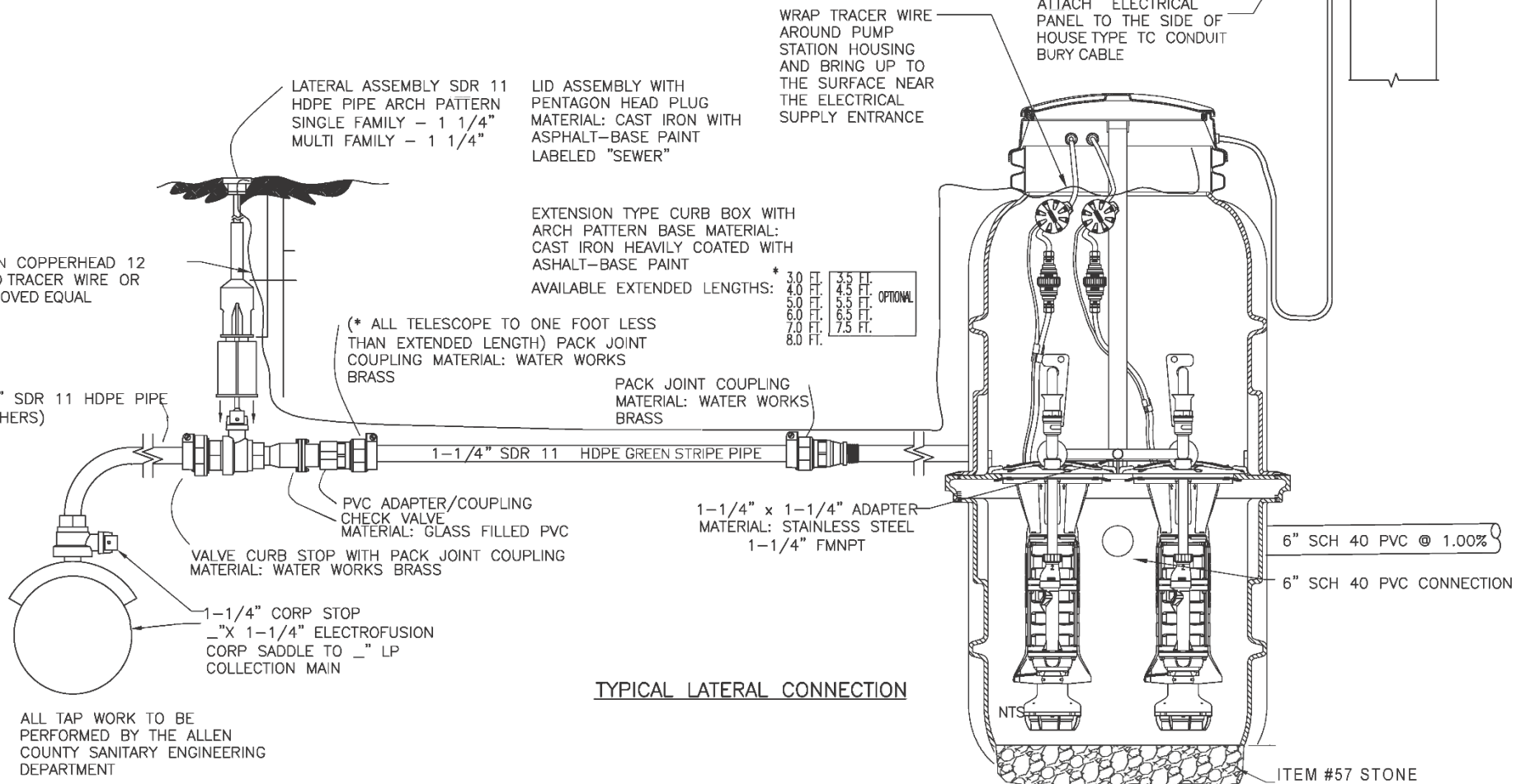
PIN	FUNCTION	2000S	EXTREME
1	MANUAL RUN	RED	BROWN
2	L1	BLACK	RED
3	L2	WHITE	BLACK
4	GND	GREEN	GRN/YEL
5	ALARM FEED	ORANGE	YELLOW
6	ALARM RETURN	BLUE	BLUE



DUPLEX T-260 ALTERNATING PANEL, 240V 80A DOUBLE POLE POWER W/ WIRING LEVEL CONTROL

LM000329 P1

CONTROL CABLE: TYPE TC DIRECT BURIAL, 12AWG, SIX CONDUCTOR



TYPICAL LATERAL CONNECTION

ALL TAP WORK TO BE PERFORMED BY THE ALLEN COUNTY SANITARY ENGINEERING DEPARTMENT

AGENCY
SANITARY ENGINEERING DEPARTMENT
ALLEN COUNTY, OHIO

PROJECT
MULTIPLE FAMILY RESIDENTIAL
LP SANITARY COLLECTION

SUBJECT
STANDARD DRAWING NO. GPD 2.0

DATE
05-04-17
DRAWING NO.