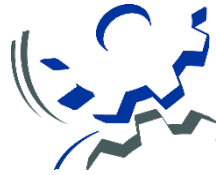




Sanitary Engineering Department

3230 N. Cole Street, Lima, Ohio 45801
Tel: (419) 996-4670 ♦ Fax: (419) 229-3297
Website: <http://www.allencountyohio.com/sanitary-engineering/>



LOW PRESSURE PUMP SYSTEM

WHEN YOU NEED TO CALL FOR INSPECTIONS

1. Contractor/Plumber **MUST** meet with a representative from the Sanitary Engineering Department to discuss the location of the E-One pump and control panel.
2. The E-One pump station must be inspected before it is backfilled. Call the Sanitary Engineering Department at least **24 hours prior** to when the inspection is needed (*ballast must be exposed to ensure it is properly anchored*).
3. Service lateral/force main must be inspected before backfill. Call the Sanitary Engineering Department at least **24 hours prior** to when the inspection is needed.
4. The E-One pump station electrical work must be inspected by the Sanitary Engineering Department. Call the Sanitary Engineering Department at least **24 hours prior** to when the inspection is needed.
5. The Sanitary Engineering Department will make the hot-tap on the low-pressure sewer main once the main is properly exposed. Call the Sanitary Engineering Department **48 hours prior** to when the hot-tap is needed. **Steps 1, 2, and 3 must be completed and inspected before our department will perform a hot-tap.**
6. The E-One pump station must be started up by the Sanitary Engineering Department after the electrical work is inspected and approved. Call the Sanitary Engineering Department at least **24 hours prior** to when the start-up is needed.

Additional Information

- A. E-One pump may be picked up from ACSE Department between 7:30a.m. and 8:00a.m. Monday-Friday. Please call ahead so it will be ready for pickup.
- B. No work will be approved by the Sanitary Engineering Department without a permit being obtained from our office prior to any sanitary sewer related work being done.
- C. Final Grade Extension required (additional cost) should system final grade need adjusted.
- D. Control Panel must be mounted on the side of the home and visible from the street. E-One pump must also be visible from street and not obstructed.



Sanitary Engineering Department

3230 N. Cole Street, Lima, Ohio 45801
Tel: (419) 996-4670 ♦ Fax: (419) 229-3297
Website: <http://www.allencountyohio.com/sanitary-engineering/>

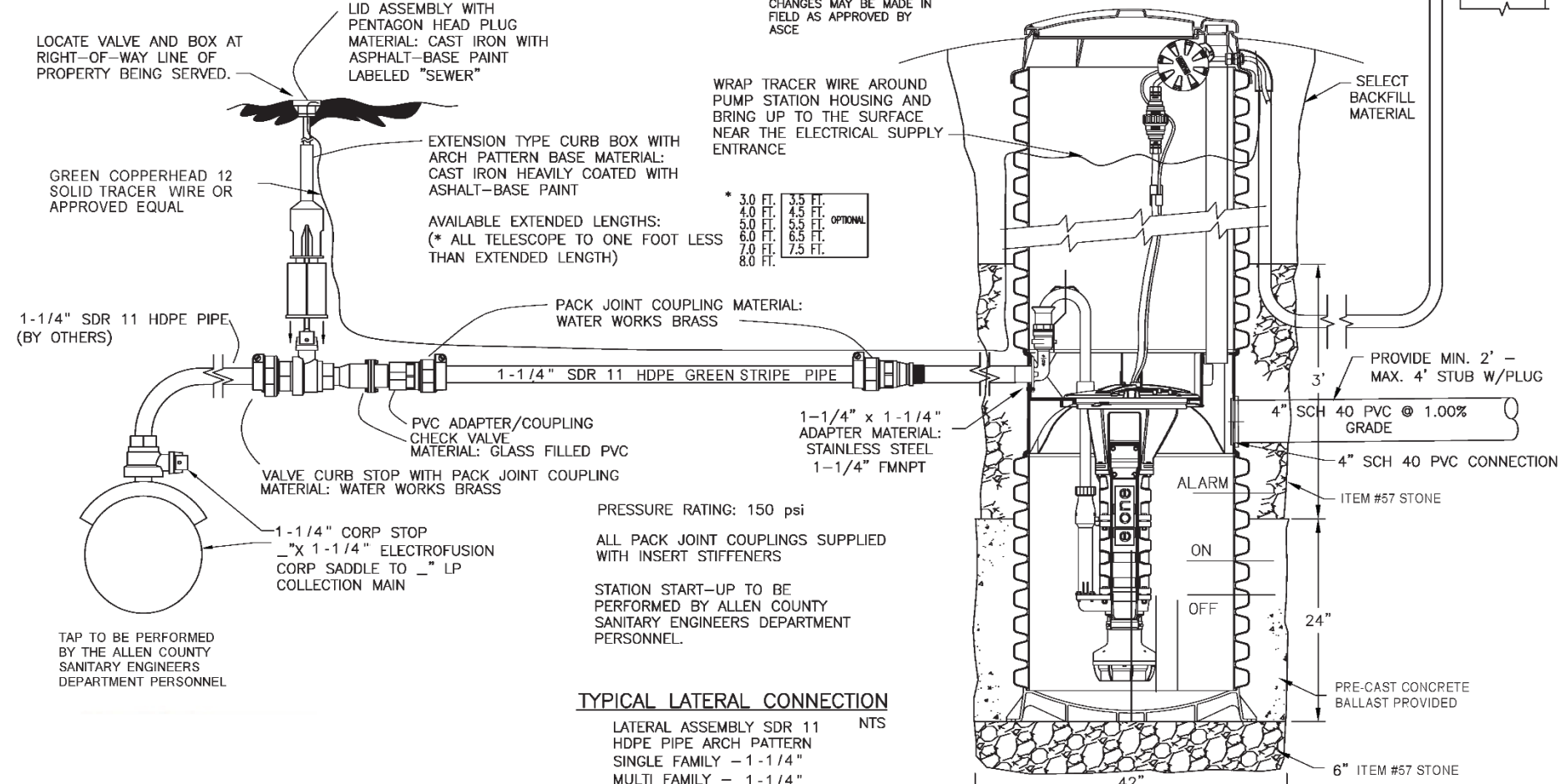
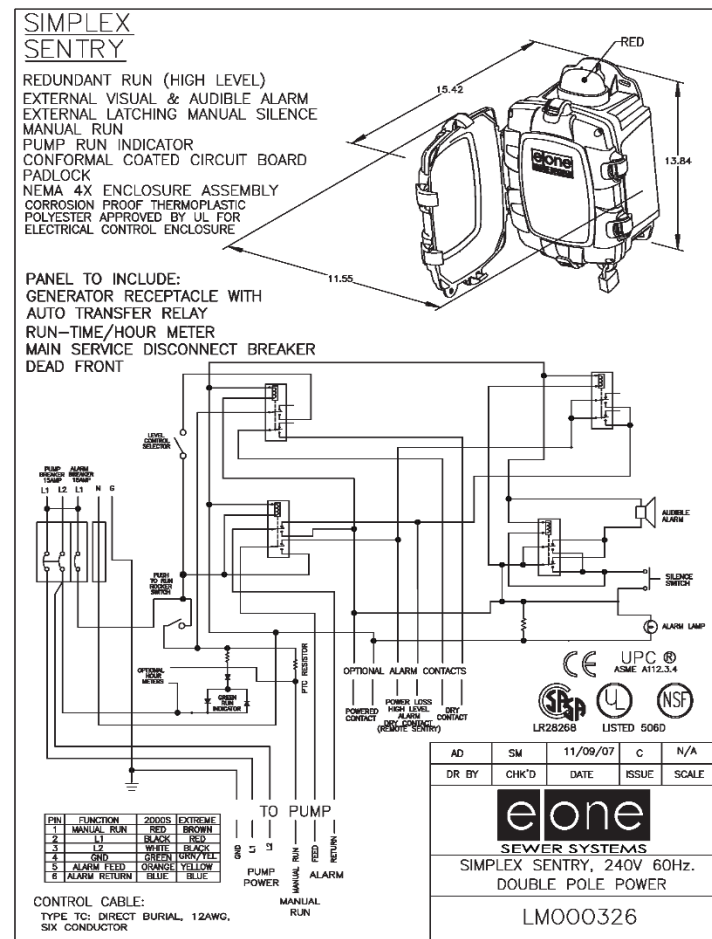
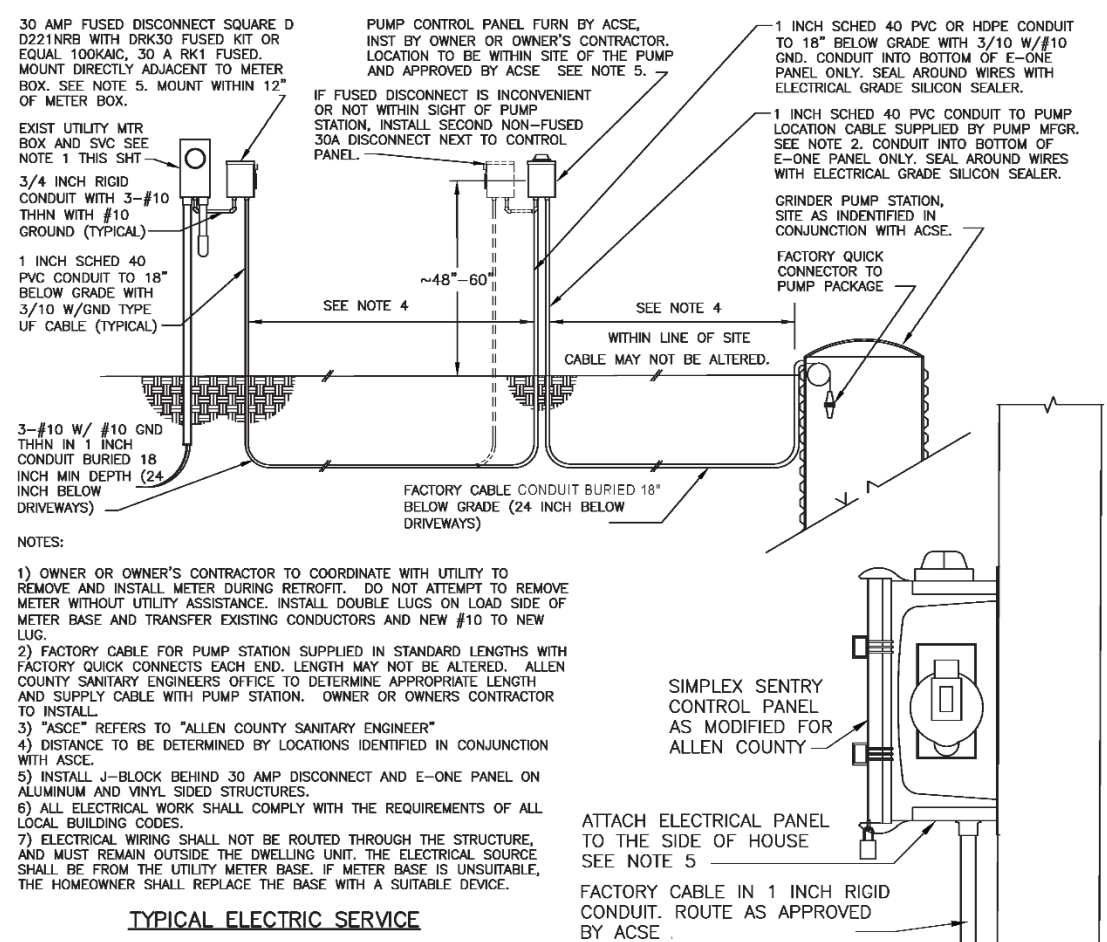
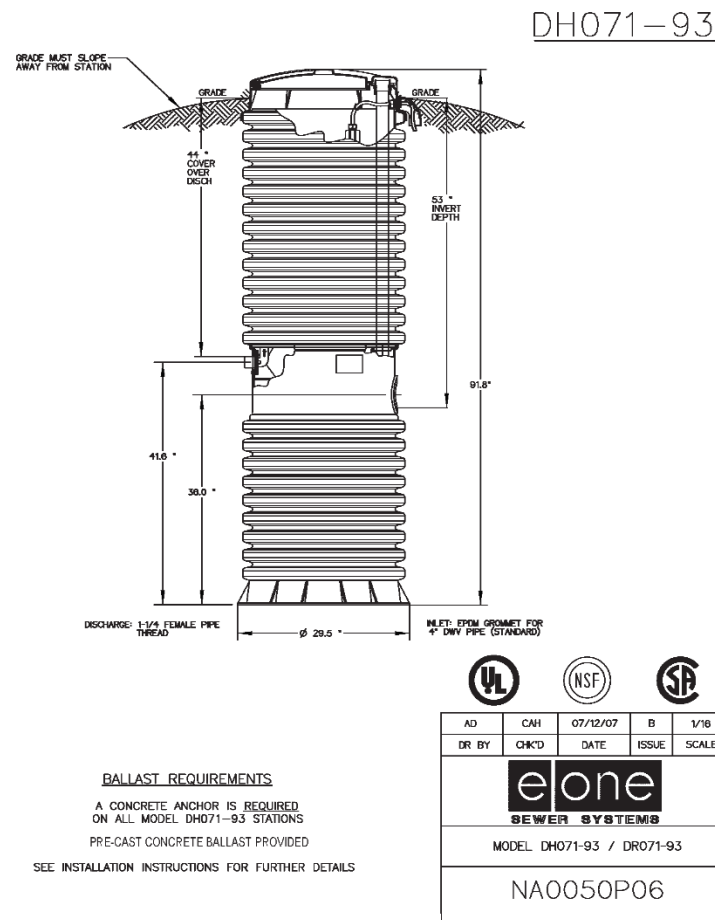
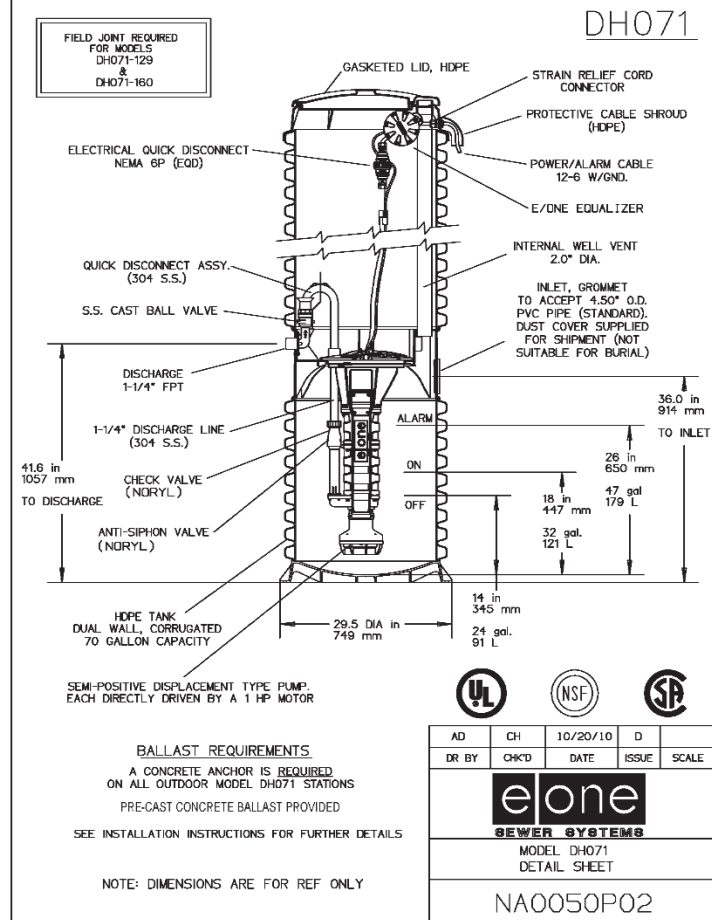


INSTALLATION REQUIREMENTS FOR LOW PRESSURE PUMP SYSTEM SINGLE FAMILY RESIDENCE See Drawing GPD 1.0

E-One Pump Station purchased through ACSE Department at the time a permit is obtained. Call 419-996-4670 for pricing information. Pump portion of E-One will be supplied when system is ready for start-up.

1. When ordering, the Builder/Contractor is to determine:
 - a. Depth of cover over 4" inlet sewer.
 - b. Length of type TC direct-bury cable required between pump unit and alarm panel.
2. Items Included with Permit/Pump Purchase
 - a. E-One Model DH071 pump unit. 4" inlet for 4" Sch 40 PVC pipe
 - b. MOD-250-1 alarm panel
 - c. Pre-Cast Ballast
 - d. Service Lateral Kit for 1¼" SDR 11
 - e. HDPE Pipe Valve Box
 - f. 32' Type TC electric cable to service pumps
 - g. Corporation stop with corporation saddle
3. Bill of Materials by Builder/Contractor:
 - a. 30amp fused disconnect (#10AWG-4 wire:2 pwr, neutral, & ground)
 - b. 1¼" x 1¼" Stainless Steel bushings
 - c. 1¼" DR 11 HDPE (green stripe or solid green pipe) for discharge force main
 - d. Copperhead #12 solid green tracer wire or equal installed with 1¼" force main between the pump and the pressure main.
4. House lateral to be 4" Sch 40 PVC
 - a. ASTM D 1785 - PVC Sch 40 pressure rated
 - a. ASTM D 2665 – PVC Drain, Waste and Vent Pipe
5. Electric service to be 240v / 1ph / 60 Hz to the pump location. Alarm/control panel must be visible from street and not obstructed.
6. Builder/Contractor must contact ACSE Department 48 hours in advance to schedule an inspection.
7. Pump Start-up
 - a. Electrical work to be completed before pump start-up can be scheduled.*
***Refer to diagram inside E-1 panel**
 - b. ACSE Department to initiate and complete the start-up of the pump installation.
8. Service Agreement to be granted to ACSE Department by property owner for operation and maintenance of pump station and electrical. This must be signed by the property owners before pump station will be started-up.

CAUTION: DO NOT ALTER PANEL OR ANY PART OF THE TANK OR COMPONENTS



SINGLE FAMILY RESIDENTIAL
LP SANITARY COLLECTION

5-04-17
DRAWING NO.